

VORTAC ARG <b>114.5</b> Chan <b>92</b>	APP CRS <b>197°</b>	Rwy Idg <b>5002</b> TDZE <b>239</b> Apt Elev <b>239</b>
--	------------------------	---

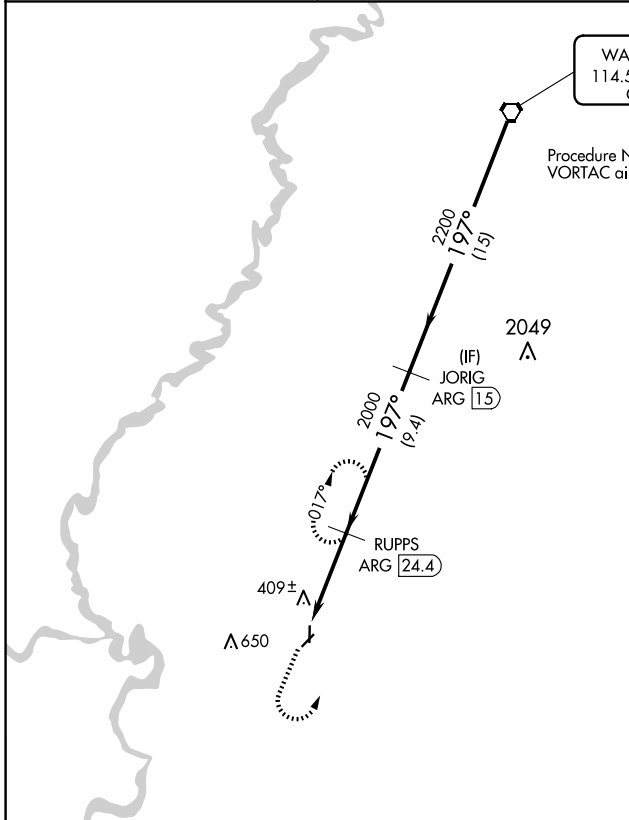
# VOR RWY 18

NEWPORT RGNL (M19)

⚠ When local altimeter setting not received, use Batesville altimeter setting and increase all MDAs 100 feet.  
⚠ DME required.

MISSED APPROACH: Climb to 2000 then left turn on ARG VORTAC R-197 to RUPPS/24.4 DME and hold.

AWOS-3PT <b>118.15</b>	MEMPHIS CENTER <b>120.075 289.4</b>	UNICOM <b>122.8</b> (CTAF) <b>①</b>
---------------------------	--	--

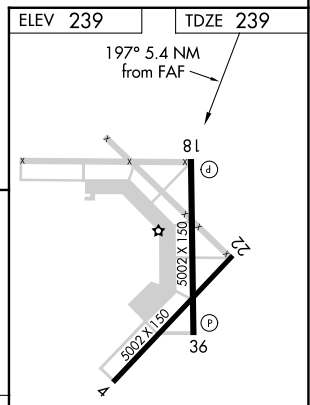
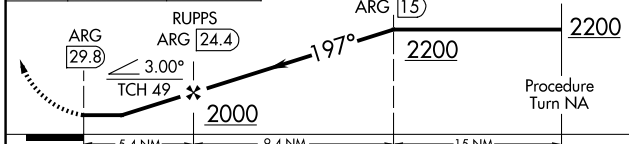
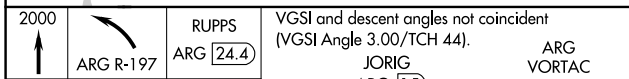


IAF  
 WALNUT RIDGE  
 114.5 ARG **①**  
 Chan 92

Procedure NA for arrivals on ARG  
 VORTAC airway radials 149 CW 211.

SC-1, 20 FEB 2025 to 20 MAR 2025

SC-1, 20 FEB 2025 to 20 MAR 2025



CATEGORY	A	B	C	D
S-18	1300-1¼ 1061 (1100-1¼)	1300-1½ 1061 (1100-1½)	1300-3	1061 (1100-3)
CIRCLING	1300-1¼ 1061 (1100-1¼)	1300-1½ 1061 (1100-1½)	1300-3	1061 (1100-3)

REIL Rwy 18 and 36  
 MRL Rwy 18-36 **①**