

BARMY FIVE DEPARTURE (RNAV)

SE-2, 20 FEB 2025 to 20 MAR 2025

CHARLOTTE DEP CON
120.05 307.8
AWOS-3
120.825
GCO
121.725
UNICOM
122.725

TOP ALTITUDE:
3000

RNAV 1 - DME/DME/IRU or GPS.
RADAR required.



RALEIGH/DURHAM
RDU



FL180
*2300
048°
(22)



NOTE: For turbo jets only.
NOTE: If unable to accept climb rates, advise ATC on initial contact.
NOTE: Transponder code will be issued via PDC or Charlotte CLNC DEL.
NOTE: Upon reaching 10000 MSL, accelerate to and maintain 280K,
if unable advise ATC.

FL180
*1900
077°
(39)

10400
*2100
077°
(13)



GULFY

BARMY

FL180
*1900
077°
(39)

BATTA



TAR RIVER
TYI

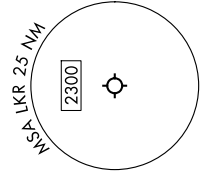
FL180
*3300
078°
(17)



NUITZE

FL180
*3400
084°
(70)

TAKEOFF MINIMUMS
Rwys 6, 24: Standard.



NOTE: Chart not to scale.

DEPARTURE ROUTE DESCRIPTION

Climb on heading assigned by ATC on RADAR vectors to MESHY, then on depicted route to BARMY. Then on assigned transition. Maintain 3000, expect clearance to filed altitude within 10 minutes after departure.

- NUITZE TRANSITION (BARMY5.NUITZE)
- RALEIGH/DURHAM TRANSITION (BARMY5.RDU)
- TAR RIVER TRANSITION (BARMY5.TYI)

BARMY FIVE DEPARTURE (RNAV)

SE-2, 20 FEB 2025 to 20 MAR 2025