

(ESTRR5.ESTRR) 24081

# ESTRR FIVE DEPARTURE (RNAV)

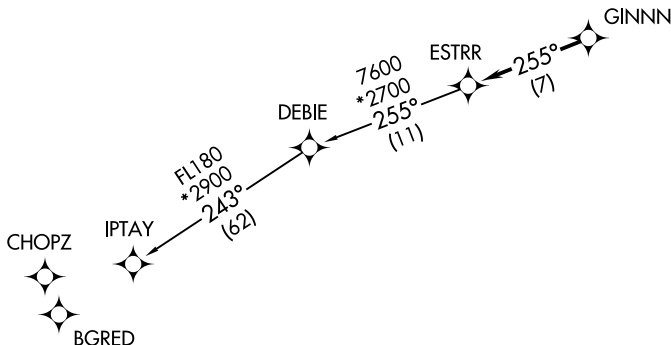
LANCASTER COUNTY-MC WHIRTER FLD (LKR)  
LANCASTER, SOUTH CAROLINA  
AL-5853 (FAA)

**TOP ALTITUDE:**  
**3000**

RNAV 1 - DME/DME/IRU or GPS.

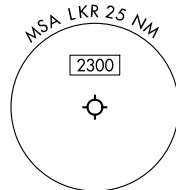
RADAR required.

CHARLOTTE DEP CON  
120.05 307.8  
AWOS-3  
120.825  
GCO  
121.725  
UNICOM (CTAF)  
122.725



**TAKEOFF MINIMUMS**  
Rwys 6, 24: Standard.

- NOTE: For turbo jets only.
- NOTE: If unable to accept climb rates, advise ATC on initial contact.
- NOTE: Transponder code will be issued via PDC or Charlotte CLNC DEL.
- NOTE: Upon reaching 10000 MSL, accelerate to and maintain 280K, if unable advise ATC.



NOTE: Chart not to scale.



## DEPARTURE ROUTE DESCRIPTION

Climb on heading assigned by ATC, on RADAR vectors to GINNN, then on track 255° to ESTRR, then on IPTAY Transition. Maintain 3000, expect filed altitude within 10 minutes after departure.

IPTAY TRANSITION (ESTRR5.IPTAY)

**ESTRR FIVE DEPARTURE (RNAV)**  
(ESTRR5.ESTRR) 21MAR24

LANCASTER, SOUTH CAROLINA  
LANCASTER COUNTY-MC WHIRTER FLD (LKR)

SE-2, 20 FEB 2025 to 20 MAR 2025

SE-2, 20 FEB 2025 to 20 MAR 2025