

CHARLOTTE DEP CON  
 120.05 307.8  
 AWOS-3  
 120.825  
 GCO  
 121.725  
 UNICOM (CTAF)  
 122.725

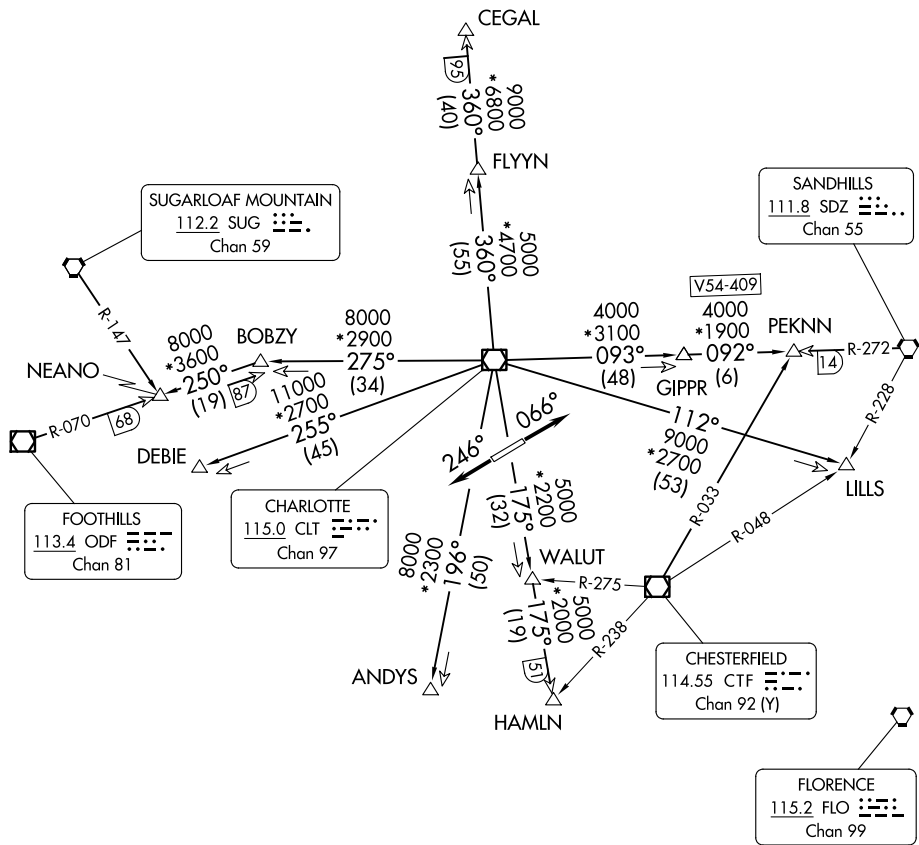
**TOP ALTITUDE:  
3000**

RADAR and DME required.

TAKEOFF MINIMUMS  
 Rwy's 6, 24: Standard.

SE-2, 20 FEB 2025 to 20 MAR 2025

SE-2, 20 FEB 2025 to 20 MAR 2025



NOTE: For propeller aircraft only.  
 NOTE: Turboprops: Operate in a manner that will result in best forward speed and climb rate.  
 NOTE: Transponder code will be issued via Charlotte clearance delivery.

(CONTINUED ON FOLLOWING PAGE)

NOTE: Chart not to scale.



DEPARTURE ROUTE DESCRIPTION

TAKEOFF RUNWAY 6: Climb on heading 066° thence. . . .

TAKEOFF RUNWAY 24: Climb on heading 246° thence. . . .

. . . .expect RADAR vectors to intercept filed/assigned transition or enroute fix/navaid.  
Maintain 3000, expect filed altitude/flight level 10 minutes after departure.

ANDYS TRANSITION (KNI3.ANDYS): From over CLT VOR/DME on CLT R-196 to ANDYS.

CEGAL TRANSITION (KNI3.CEGAL): From over CLT VOR/DME on CLT R-360 to CEGAL.

DEBIE TRANSITION (KNI3.DEBIE): From over CLT VOR/DME on CLT R-255 to DEBIE.

FLYYN TRANSITION (KNI3.FLYYN): From over CLT VOR/DME on CLT R-360 to FLYYN.

HAMLN TRANSITION (KNI3.HAMLN): From over CLT VOR/DME on CLT R-175 to HAMLN.

LILLS TRANSITION (KNI3.LILLS): From over CLT VOR/DME on CLT R-112 to LILLS.

NEANO TRANSITION (KNI3.NEANO): From over CLT VOR/DME on CLT R-275 to BOBZY,  
then on ODF R-070 to NEANO.

PEKNN TRANSITION (KNI3.PEKNN): From over CLT VOR/DME on CLT R-093 to GIPPR,  
then on SDZ R-272 to PEKNN.

SE-2, 20 FEB 2025 to 20 MAR 2025

SE-2, 20 FEB 2025 to 20 MAR 2025