

WAAS CH <b>63203</b> <b>W18A</b>	APP CRS <b>182°</b>	Rwy Idg TDZE Apt Elev	<b>8003</b> <b>264</b> <b>264</b>
--	------------------------	-----------------------------	---

# RNAV (GPS) RWY 18

GOLDEN TRIANGLE RGNL (GTR)

RNP APCH - GPS.

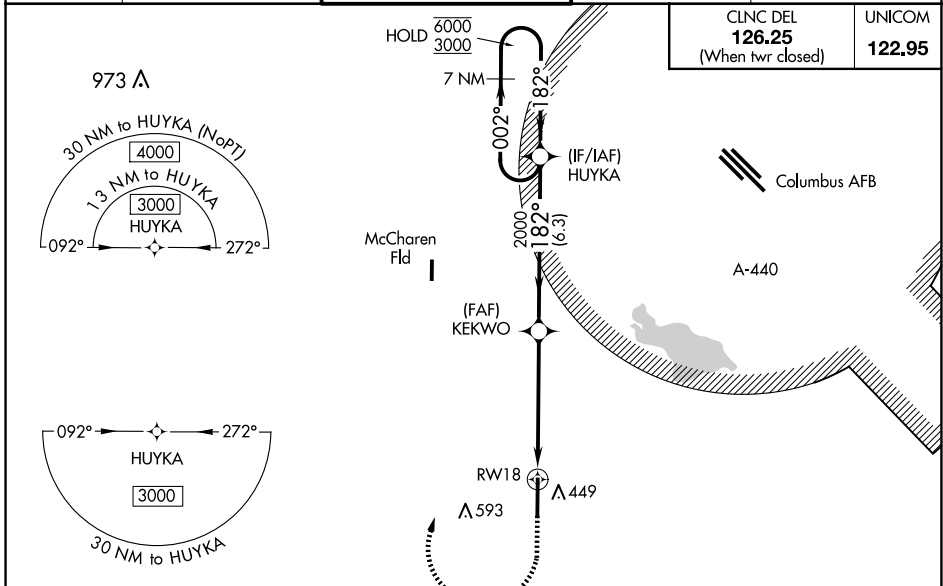
**⚠** For uncompensated Baro-VNAV systems, LNAV/VNAV NA below -15°C or above 54°C. For inop ALS, increase LPV Cat E visibility to 3/4 SM, LNAV/VNAV Cat E to 1 3/8 SM, and LNAV Cat C/D/E to 1 1/8 SM.



**MISSED APPROACH:**  
Climb to 800 then climbing right turn to 3000 direct HUYKA and hold, continue climb-in-hold to 3000.

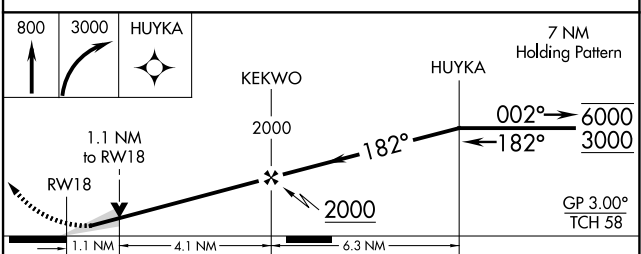
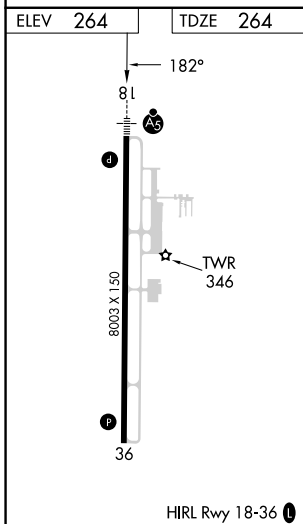
ATIS <b>126.375</b>	COLUMBUS APP CON* <b>135.6 323.275</b>	GOLDEN TRIANGLE TOWER* <b>118.2 (CTAF) 0 298.875</b>	GND CON <b>135.375 322.475</b>	CLNC DEL <b>135.375 322.475</b>
------------------------	---	---	-----------------------------------	------------------------------------

CLNC DEL <b>126.25</b> (When twr closed)	UNICOM <b>122.95</b>
--	-------------------------



SC-4, 20 FEB 2025 to 20 MAR 2025

SC-4, 20 FEB 2025 to 20 MAR 2025



CATEGORY	A	B	C	D	E
LPV DA		464-1/2	200 (200-1/2)		
LNAV/VNAV DA		710-7/8	446 (500-7/8)		
LNAV MDA	680-1/2	416 (500-1/2)	680-3/4	416 (500-3/4)	
CIRCLING	760-1	496 (500-1)	960-2 696 (700-2)	960-2 1/4 696 (700-2 1/4)	960-2 1/2 696 (700-2 1/2)