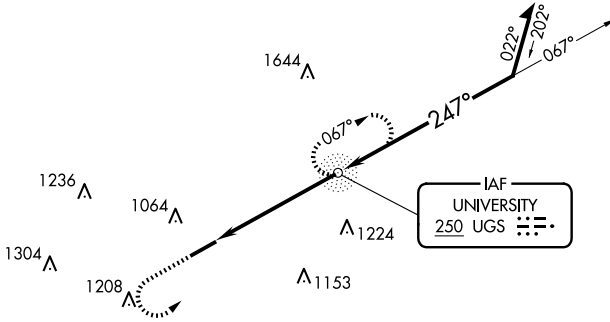


NDB UGS	APP CRS	Rwy Idg	<b>5600</b>
<b>250</b>	<b>247°</b>	TDZE	<b>765</b>
		Apt Elev	<b>766</b>

**NDB RWY 25**  
OHIO UNIVERSITY (UNI)

RADAR required for procedure entry. ⚠ NA When local altimeter setting not received, use PKB altimeter setting: increase all MDAs 100 feet; increase S-25 visibility Cat B/C/D ½ SM, and Circling visibility Cat B/C/D ½ SM.		MISSED APPROACH: Climb to 3000 then left turn direct UGS NDB and hold.	
AWOS-3 <b>128.325</b>	HUNTINGTON APP CON <b>120.95 270.1</b>	CLNC DEL <b>120.95</b>	UNICOM <b>123.075 (CTAF) 0</b>



EC-2, 20 FEB 2025 to 20 MAR 2025

EC-2, 20 FEB 2025 to 20 MAR 2025

ELEV 766	TDZE 765
----------	----------

MIRL Rwy 7-25 0  
REIL Rwys 7 and 25 0

FAF to MAP 5.1 NM					
Knots	60	90	120	150	180
Min:Sec	5:06	3:24	2:33	2:02	1:42

MISSED APPROACH PROCEDURE:
 

- 3000 UGS
- UGS NDB
- Remain within 10 NM
- 3000
- 067°
- 247°
- 2500
- 3.16° TCH 41
- 5.1 NM

CATEGORY	A	B	C	D
S-25	1460-1	695 (700-1)	1460-2	695 (700-2)
CIRCLING	1460-1	694 (700-1)	1460-2	1520-2½ 694 (700-2) 754 (800-2½)