

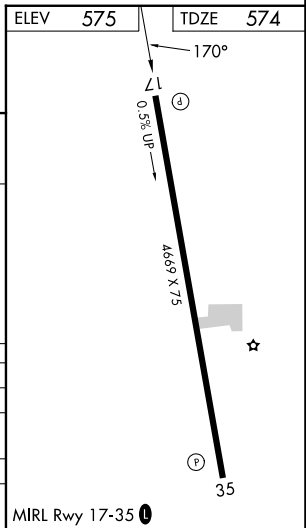
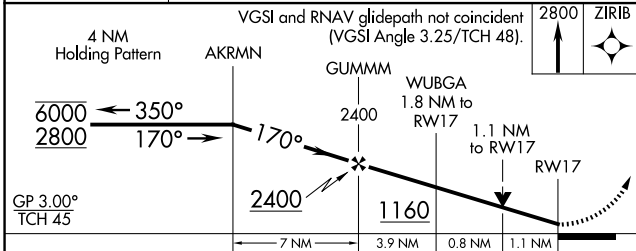
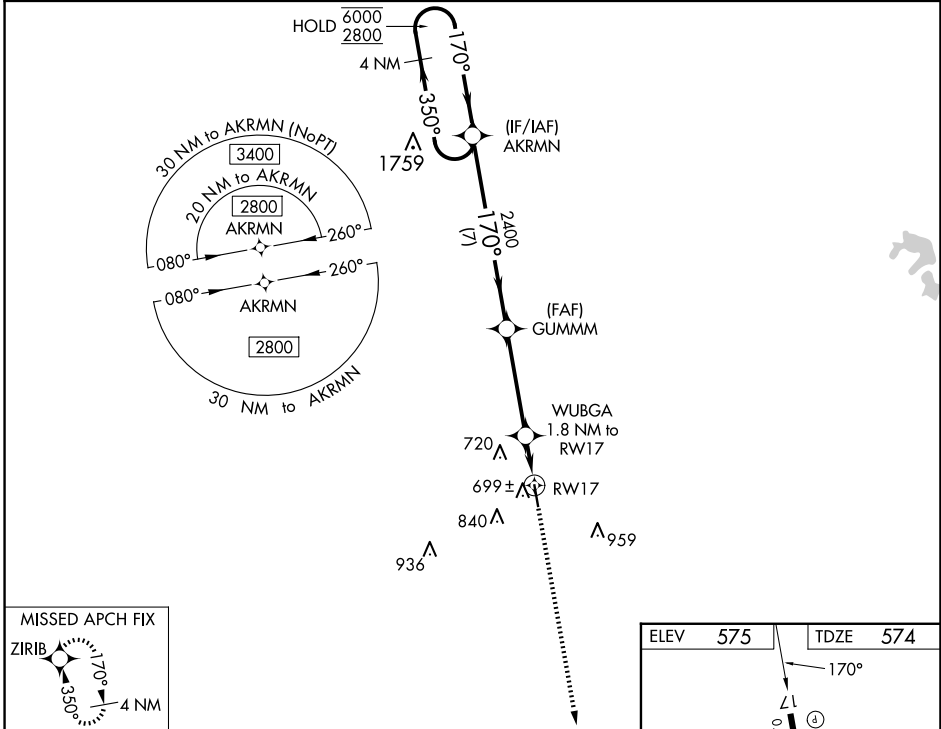
WAAS CH <b>70336</b> <b>W17A</b>	APP CRS <b>170°</b>	Rwy Idg TDZE Apt Elev	<b>4669</b> <b>574</b> <b>575</b>
--	------------------------	-----------------------------	---

# RNAV (GPS) RWY 17

LOUISVILLE/WINSTON COUNTY (LMS)

RNP APCH - GPS.	<p><b>▽</b> Rwy 17 helicopter visibility reduction below 3/4 SM NA. <b>▲</b> For uncompensated Baro-VNAV systems, LNAV/VNAV NA below -16°C or above 54°C.</p>	MISSED APPROACH: Climb to 2800 direct ZIRIB and hold.
-----------------	---	---

AWOS-3PT <b>118.325</b>	MEMPHIS CENTER <b>132.75 263.0</b>	UNICOM <b>122.7 (CTAF) 0</b>
----------------------------	---------------------------------------	---------------------------------



CATEGORY	A	B	C	D
LPV DA		824-1	250 (300-1)	
LNAV/VNAV DA		880-1	306 (400-1)	
LNAV MDA	960-1	386 (400-1)	960-1 1/8	386 (400-1 1/8)
<b>C</b> CIRCLING	1020-1 445 (500-1)	1260-1 685 (700-1)	1260-2 685 (700-2)	1260-2 1/4 685 (700-2 1/4)

MIRL Rwy 17-35 0