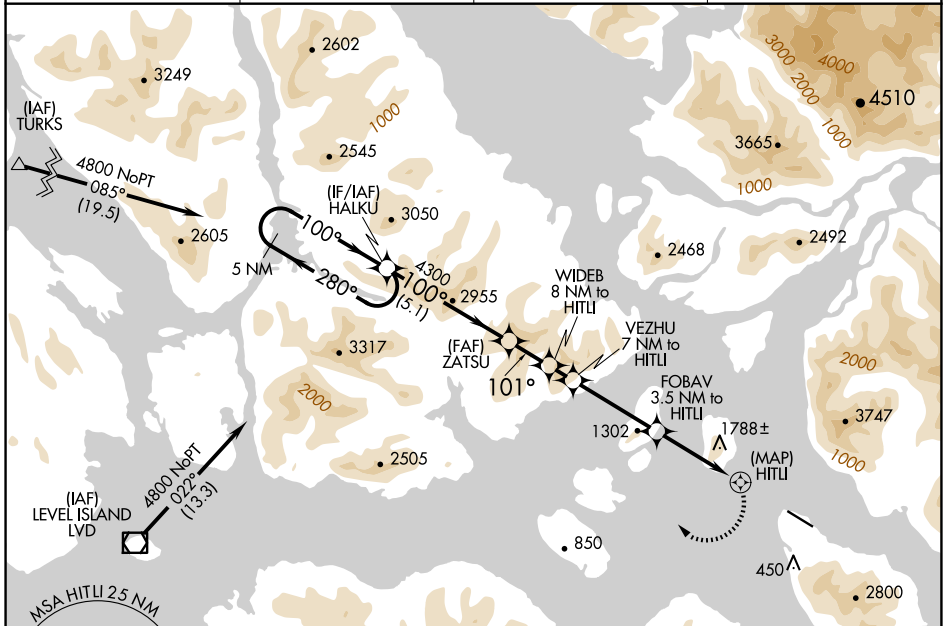


APP CRS	Rwy Idg	<b>6000</b>
<b>101°</b>	TDZE	<b>27</b>
	Apt Elev	<b>44</b>

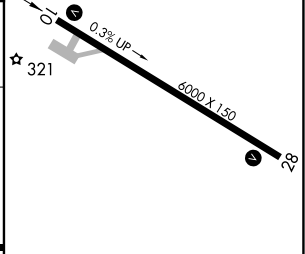
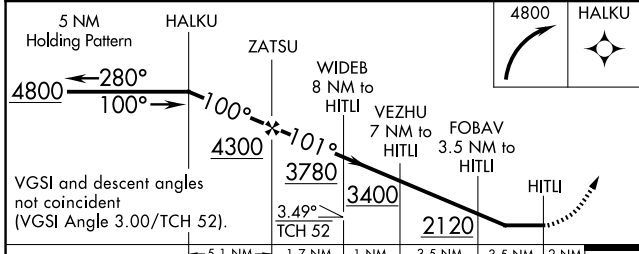
# RNAV (GPS) RWY 10

WRANGELL (WRG) (PAWG)

RNP APCH-GPS		MISSED APPROACH: Climbing right turn to 4800 direct HALKU and hold.	
⚠ Circling NA South of Rwy 10-28. ⚠ Procedure NA at night. ❄ -5°C Helicopter visibility reduction below 1 SM NA.			
AWOS-3P	ANCHORAGE CENTER	SITKA RADIO	CTAF
<b>128.5</b>	<b>118.0</b>	<b>122.45</b>	<b>122.6</b> <b>Ⓡ</b>



ELEV	44	TDZE	27
------	----	------	----



CATEGORY	A	B	C	D
LNVA MDA	2080-2½ 2053 (2100-2½)	2080-3 2053 (2100-3)	2080-3 2053 (2100-3)	NA
<b>C</b> CIRCLING	2080-2½ 2036 (2100-2½)	2500-3 2456 (2500-3)	2500-3 2456 (2500-3)	NA

REIL Rwy 10 and 28 **Ⓡ**  
 HIRL Rwy 10-28 **Ⓡ**

AK, 20 FEB 2025 to 17 APR 2025

AK, 20 FEB 2025 to 17 APR 2025