

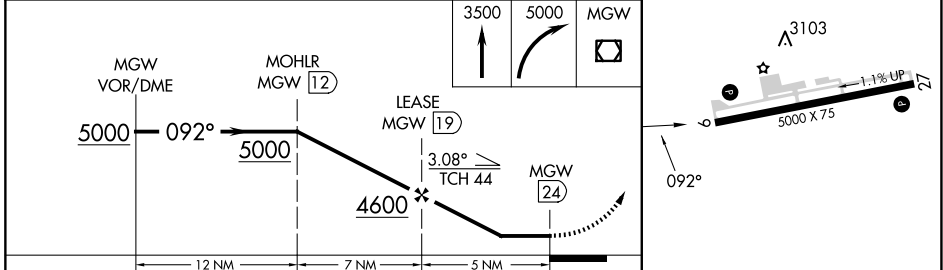
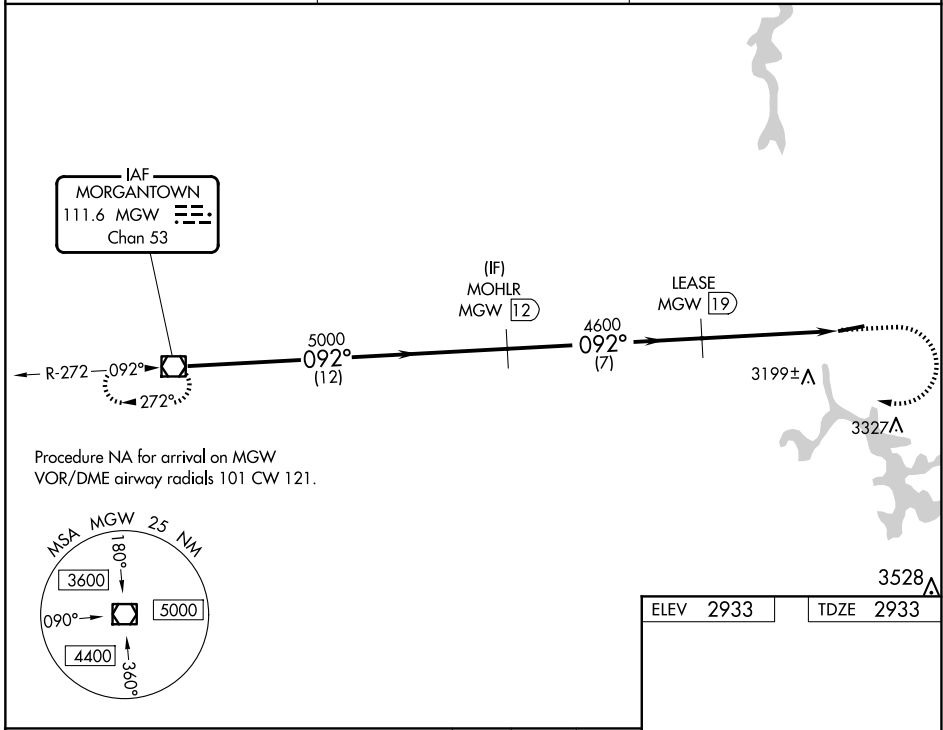
VOR/DME MGW 111.6 Chan 53	APP CRS 092°	Rwy Idg TDZE Apt Elev 5000 2933 2933
---	------------------------	--

VOR RWY 9

GARRETT COUNTY (2G4)

DME required.		MISSED APPROACH: Climb to 3500 then climbing right turn to 5000 direct MGW VOR/DME and hold.
<p>T Rwy 09 helicopter visibility reduction below $\frac{3}{4}$ SM NA. When local altimeter setting not received, use Morgantown altimeter setting and increase all MDA 300 feet; increase S-09 Cat B and Circling Cat A and B visibility $\frac{1}{4}$ SM and S-09 and Circling Cat C visibility 1 SM.</p>		

AWOS-3 120.125	CLARKSBURG APP CON * 119,425 284,65	UNICOM 123.0 (CTAF) 0
--------------------------	---	---------------------------------



CATEGORY	A	B	C	D
S-09	3460-1	527 (600-1)	3460-1½ 527 (600-1½)	NA
C CIRCLING	3460-1	527 (600-1)	3500-1½ 567 (600-1½)	NA

ELEV 2933	TDZE 2933
-----------	-----------

REIL Rwy 9 and 27 0

MIRL Rwy 9-27 0

NE-3, 20 FEB 2025 to 20 MAR 2025

NE-3, 20 FEB 2025 to 20 MAR 2025