

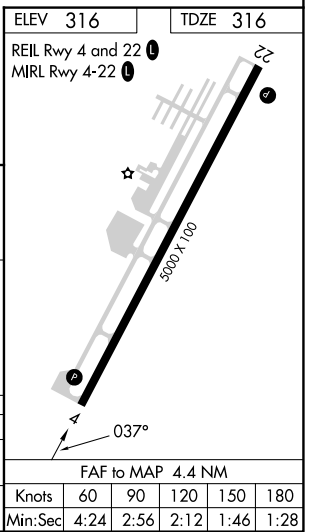
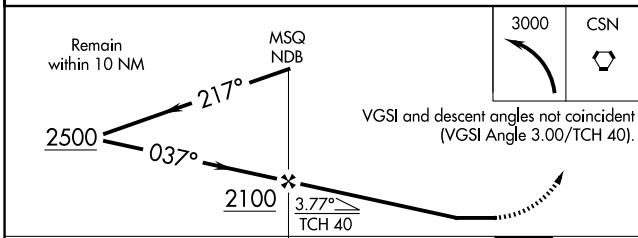
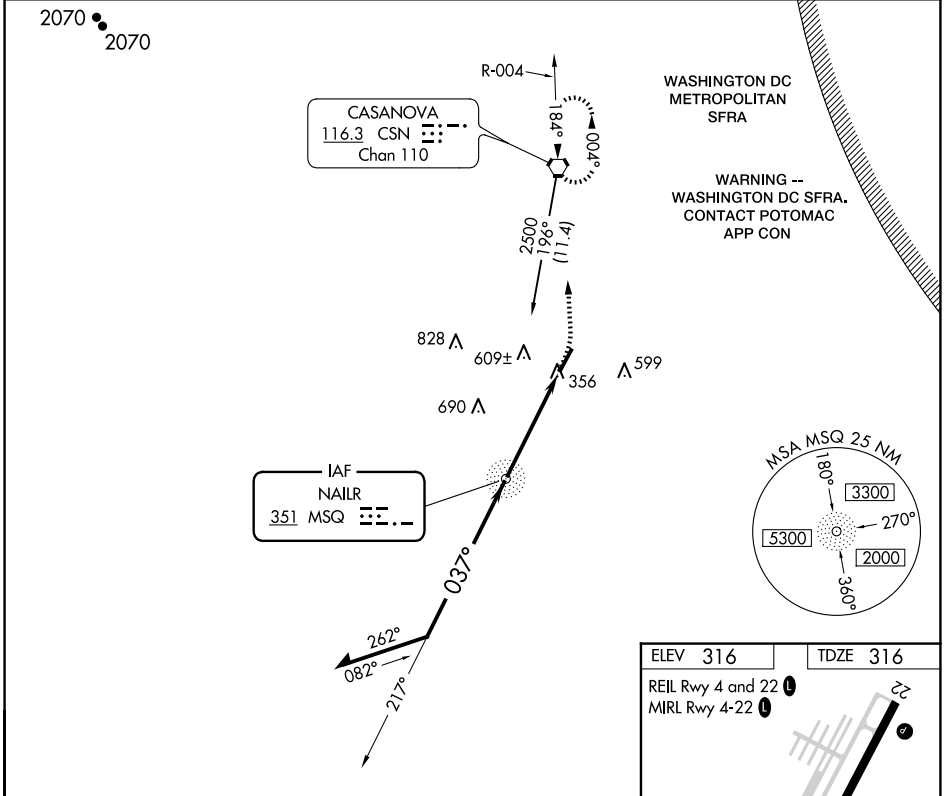
NDB MSQ	APP CRS	Rwy Idg	5000
351	037°	TDZE	316
		Apt Elev	316

NDB RWY 4

CULPEPER RGNL (CJR)

⚠ Straight-in Rwy 4 at night, Circling Rwy 4, 22 at night, operational VGSi required, remain on or above VGSi glidepath until threshold.
⚠ MISSED APPROACH: Climbing left turn to 3000 direct CSN VORTAC and hold, continue climb-in-hold to 3000.

AWOS-3 119.325	POTOMAC APP CON 128.525 306.925	CLNC DEL 121.6	UNICOM 123.075 (CTAF) 1
--------------------------	---	--------------------------	-----------------------------------



NE-3, 20 FEB 2025 to 20 MAR 2025

NE-3, 20 FEB 2025 to 20 MAR 2025