


WAAS CH <b>49009</b> <b>W05A</b>	APP CRS <b>052°</b>	Rwy Idg TDZE Apt Elev	<b>7100</b> <b>89</b> <b>93</b>
--	------------------------	-----------------------------	---------------------------------------

# RNAV (GPS) RWY 5

ALBERT J ELLIS (O.A.J)

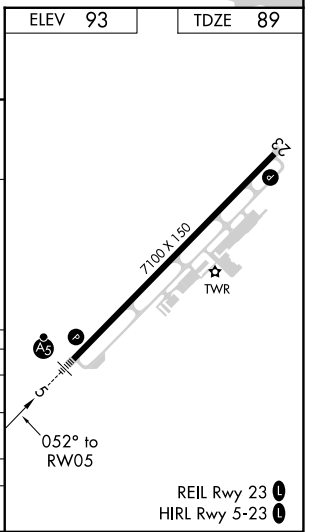
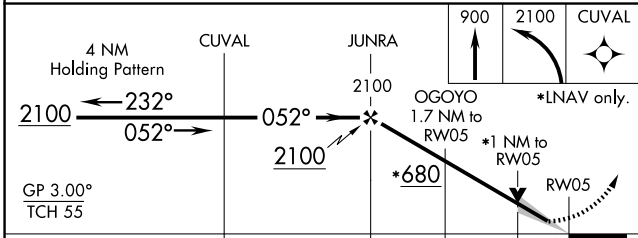
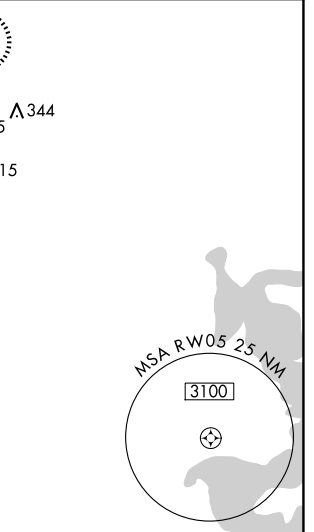
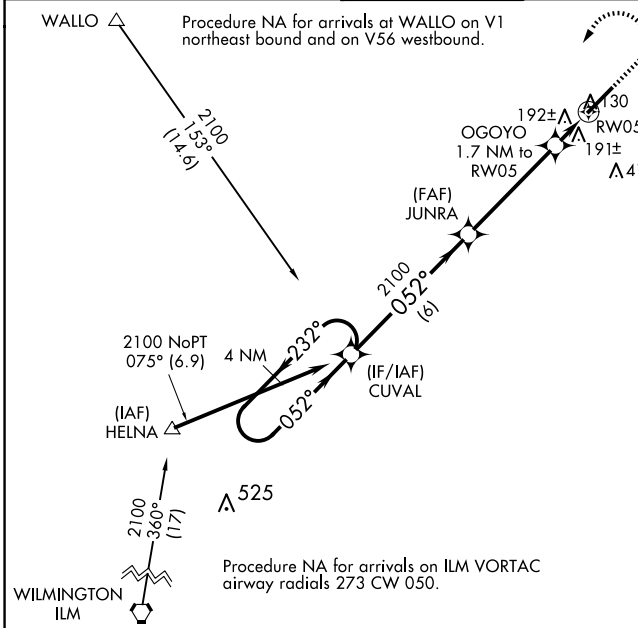
Baro-VNAV NA when using Wilmington altimeter setting. For uncompensated Baro-VNAV systems, LNAV/VNAV NA below -1.5°C (5°F) or above 43°C (109°F). DME/DME RNP -0.3 NA. VDP NA with Wilmington altimeter setting. When local altimeter setting not received, use Wilmington altimeter setting and increase LPV DA to 383 feet; increase LNAV/VNAV DA to 559 feet and all visibilities ¾ SM. Increase all MDAs 100 feet and LNAV visibility Cat C/D ¾ SM, and Circling visibility Cat C/D ¼ SM. For inoperative MALSR, increase LNAV Cat C/D visibility to 1 mile. For inoperative MALSR, when using Wilmington altimeter setting, increase LPV all Cats visibility to ¾ mile, increase LNAV/VNAV all Cats to ½ mile, and LNAV Cat C/D to ⅓ mile.

**MALSR**



**MISSED APPROACH:**  
Climb to 900 then climbing left turn to 2100 direct CUVAL and hold.

ATIS <b>124.475</b>	WILMINGTON APP CON ★ <b>135.75 317.425</b>	ELLIS TOWER ★ <b>132.65 (CTAF)</b>	GND CON <b>125.4</b>	CLNC DEL <b>121.4 257.6</b> (when twr closed)	UNICOM <b>122.95</b>
------------------------	---	---------------------------------------	-------------------------	---	-------------------------



CATEGORY	A	B	C	D
LPV DA	289-½		200 (200-½)	
LNAV/ VNAV DA	465-¾		376 (400-¾)	
LNAV MDA	460-½	371 (400-½)	460-⅝	371 (400-⅝)
CIRCLING	540-1 447 (500-1)	560-1 467 (500-1)	720-1¾ 627 (700-1¾)	720-2 627 (700-2)

SE-2, 20 FEB 2025 to 20 MAR 2025

SE-2, 20 FEB 2025 to 20 MAR 2025