

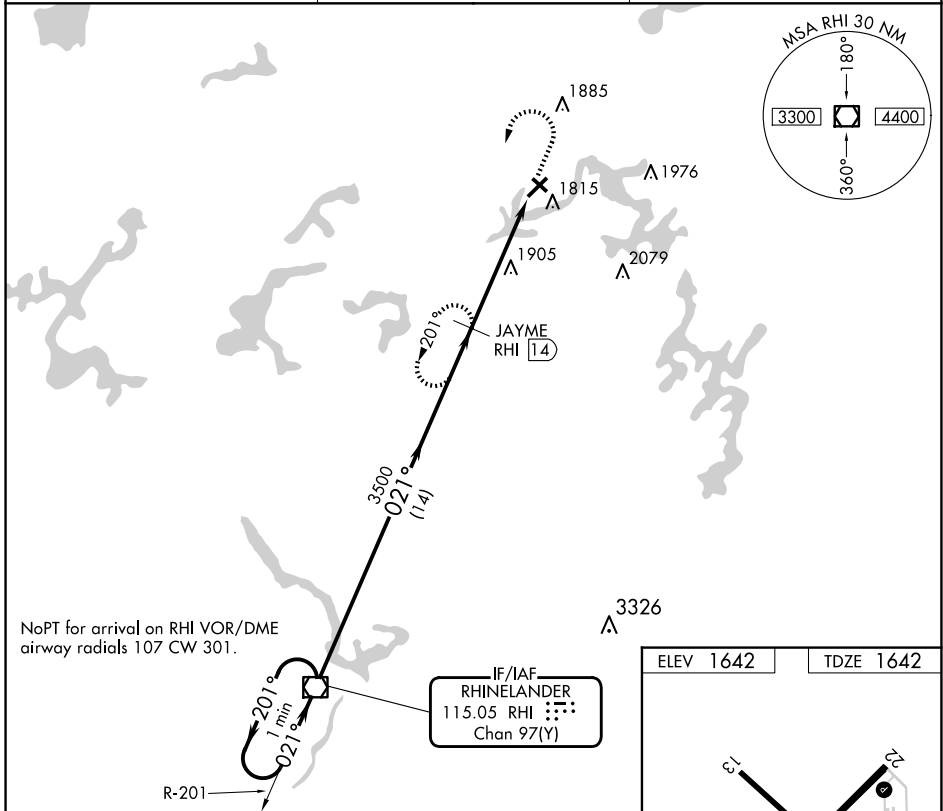
VOR/DME RHI	APP CRS	Rwy Idg	5000
115.05	021°	TDZE	1642
Chan 97(Y)		Apt Elev	1642

# VOR/DME RWY 4

EAGLE RIVER UNION (EGV)

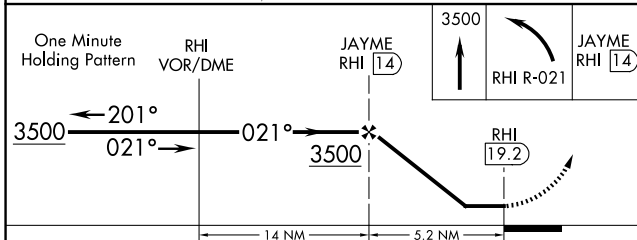
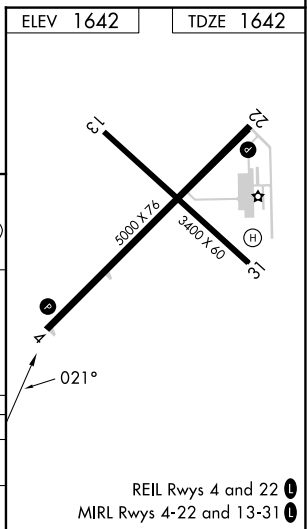
**⚠** MISSED APPROACH: Climb to 3500 then left turn on RHI VOR/DME R-021 to JAYME/14 DME and hold.

AWOS-3 <b>118.325</b>	MINNEAPOLIS CENTER <b>133.65 281.5</b>	UNICOM <b>122.8</b> (CTAF) <b>Ⓛ</b>
--------------------------	---	--



NoPT for arrival on RHI VOR/DME airway radials 107 CW 301.

IF/IAF  
RHINELANDER  
115.05 RHI  
Chan 97(Y)



CATEGORY	A	B	C	D	E
S-4	2260-1	618 (700-1)	2260-1¾ 618 (700-1¾)	2260-2 618 (700-2)	NA
CIRCLING	2260-1	618 (700-1)	2260-1¾ 618 (700-1¾)	2340-2¼ 698 (700-2¼)	NA

REIL Rwy 4 and 22 **Ⓛ**  
MIRL Rwy 4-22 and 13-31 **Ⓛ**

EC-3, 20 FEB 2025 to 20 MAR 2025

EC-3, 20 FEB 2025 to 20 MAR 2025