

LINDZ ONE DEPARTURE  
(LINDZ1.LINDZ) 16MAY24

ASPEN, COLORADO  
ASPEN-PITKIN COUNTY/SARDY FLD (ASE)

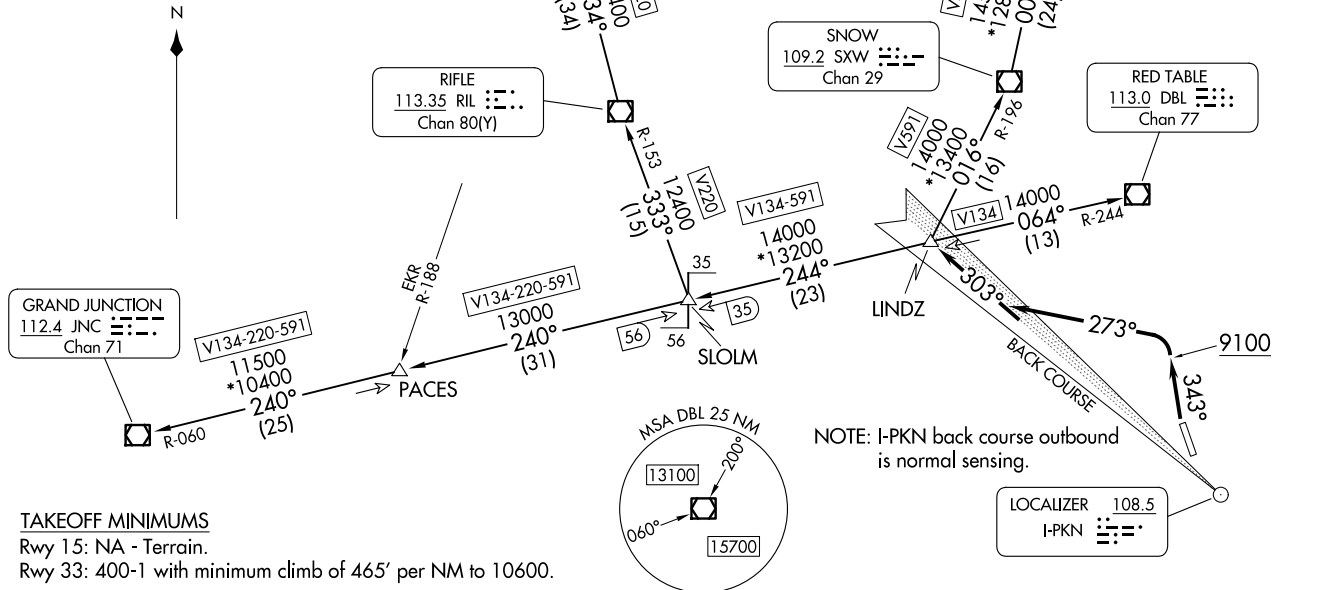
ASPEN DEP CON \*  
123.8 288.3  
DENVER CENTER  
119.85 363.15  
ATIS  
120.4  
CLNC DEL  
123.75  
GND CON  
121.9  
ASPEN TOWER \*  
118.85 (CTAF) 288.3  
UNICOM  
122.95

**TOP ALTITUDE:  
16000**

(LINDZ1.LINDZ) 24137  
LINDZ ONE DEPARTURE

AL-5889 (FAA)

ASPEN-PITKIN COUNTY/SARDY FLD (ASE)  
ASPEN, COLORADO



GRAND JUNCTION  
112.4 JNC  
Chan 71

MEEKER  
115.2 EKR  
Chan 99

RIFLE  
113.35 RIL  
Chan 80(Y)

SNOW  
109.2 SXW  
Chan 29

KREMMLING  
113.8 RLG  
Chan 85

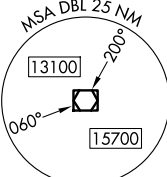
V200-591  
14500  
\*12800  
080°  
(20)

RED TABLE  
113.0 DBL  
Chan 77

V134-220-591  
13000  
240°  
(31)

V134-591  
14000  
\*13200  
244°  
(23)

V134  
14000  
064°  
(13)



NOTE: I-PKN back course outbound is normal sensing.

LOCALIZER 108.5  
I-PKN

**TAKEOFF MINIMUMS**  
Rwy 15: NA - Terrain.  
Rwy 33: 400-1 with minimum climb of 465' per NM to 10600.

NOTE: Chart not to scale.

(CONTINUED ON FOLLOWING PAGE)



DEPARTURE ROUTE DESCRIPTION

TAKEOFF RUNWAY 33: Climb heading 343° to 9100, then climbing left turn to 16000 on heading 273° to intercept I-PKN NW course outbound to LINDZ INT/DBL 13 DME. Then on assigned transition, maintain 16000, expect clearance to filed altitude 10 minutes after departure.

LOST COMMUNICATIONS: If no transmissions are received for one minute after departure or by DBL VOR/DME 9 DME, turn left on heading 273° to intercept and proceed via the I-PKN NW course (outbound) to LINDZ INT/DBL VOR/DME 13 DME, then via assigned route/transition.

GRAND JUNCTION TRANSITION (LINDZ1.JNC): From over LINDZ on DBL R-244 to SLOLM, then on JNC R-060 to JNC VOR/DME.

KREMMLING TRANSITION (LINDZ1.RLG): From over LINDZ on SXW R-196 to SXW VOR/DME, then on SXW R-001 to JESIE, then on RLG R-260 to RLG VOR/DME.

MEEKER TRANSITION (LINDZ1.EKR): From over LINDZ on DBL R-244 to SLOLM, then on RIL R-153 to RIL VOR/DME, then on RIL R-334 and EKR R-155 to EKR VOR/DME.

RED TABLE TRANSITION (LINDZ1.DBL): From over LINDZ on DBL R-244 to DBL VOR/DME.

RIFLE TRANSITION (LINDZ1.RIL): From over LINDZ on DBL R-244 to SLOLM, then on RIL R-153 to RIL VOR/DME.

SW-1, 20 FEB 2025 to 20 MAR 2025

SW-1, 20 FEB 2025 to 20 MAR 2025