

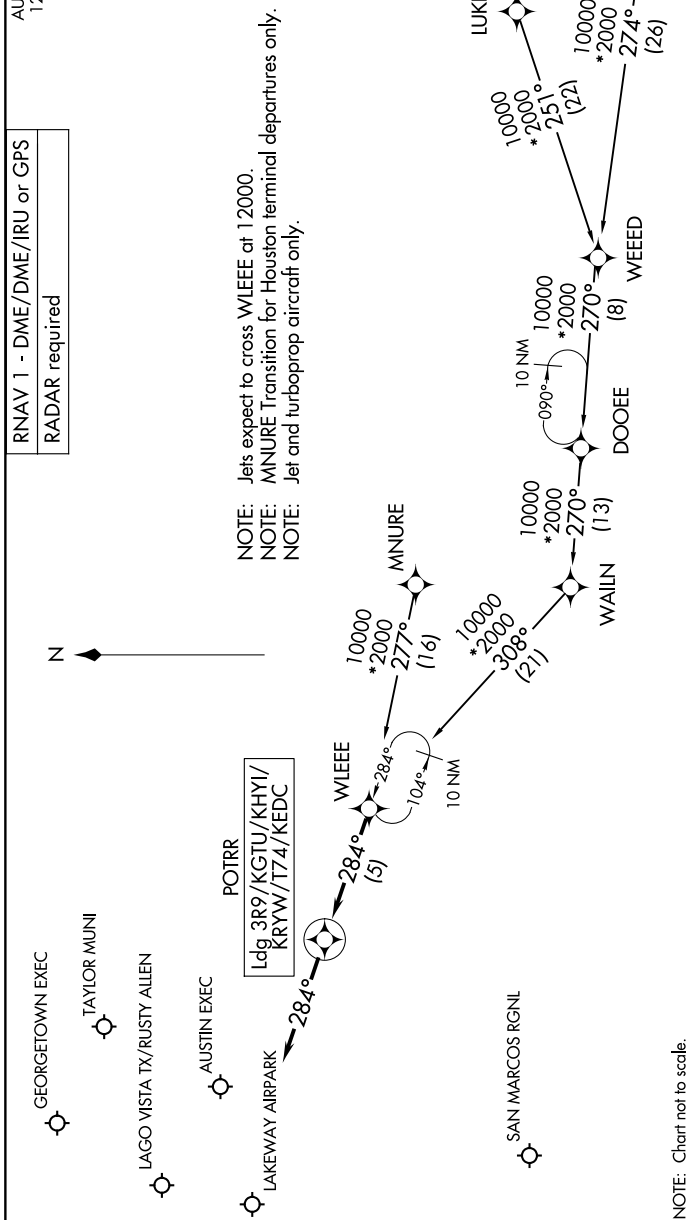
# POTRR TWO ARRIVAL (RNAV)

AUSTIN, TEXAS

SC-3, 20 FEB 2025 to 20 MAR 2025

RNAV 1 - DME/DME/IRU or GPS
RADAR required

AUSTIN APP CON  
127.225 317.45  
GTU ATIS  
118.6  
HYI ATIS  
120.825



NOTE: Jets expect to cross WLEEE at 12000.  
NOTE: MNNURE Transition for Houston terminal departures only.  
NOTE: Jet and turboprop aircraft only.

## ARRIVAL ROUTE DESCRIPTION

- DBOYS TRANSITION (DBOYS.POTRR2)
- LUKKN TRANSITION (LUKKN.POTRR2)
- MNNURE TRANSITION (MNNURE.POTRR2)
- WEEED TRANSITION (WEEED.POTRR2)

LANDING ALL AIRPORTS: From WLEEE on track 284° to POTRR, then on track 284°. Expect RADAR vectors to final approach course.

NOTE: Chart not to scale.

SC-3, 20 FEB 2025 to 20 MAR 2025

# POTRR TWO ARRIVAL (RNAV)

AUSTIN, TEXAS