

VOR/DME BAE 116.4 Chan 111	APP CRS 180°	Rwy Idg TDZE Apt Elev N/A N/A 780
--	------------------------	---

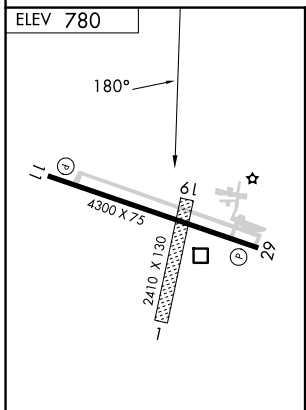
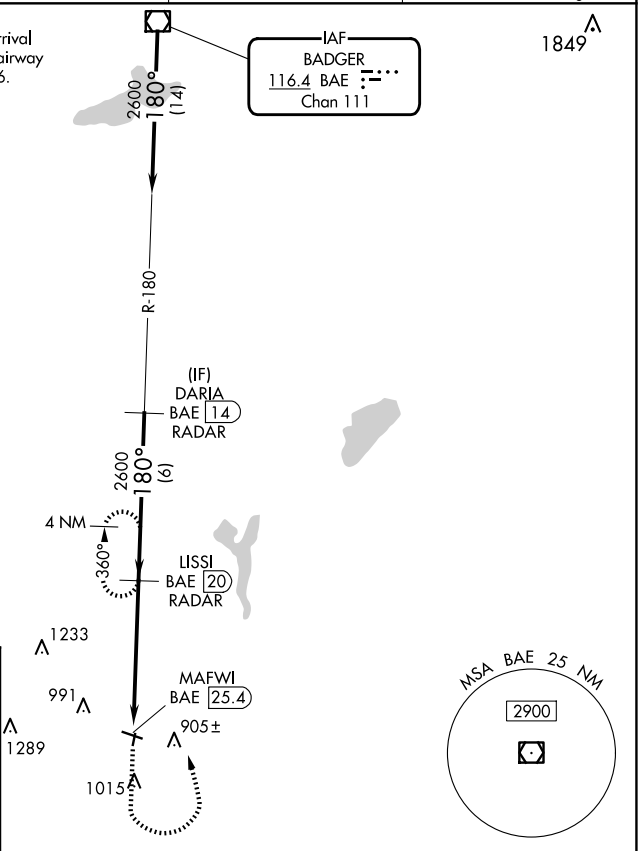
VOR-A

BURLINGTON MUNI (BUU)

DME or RADAR required.		MISSED APPROACH: Climb to 2600 then left turn on BAE VOR/DME R-180 to LISSI/20 DME/RADAR and hold.	
Circling NA to Rwys 1 and 19.			

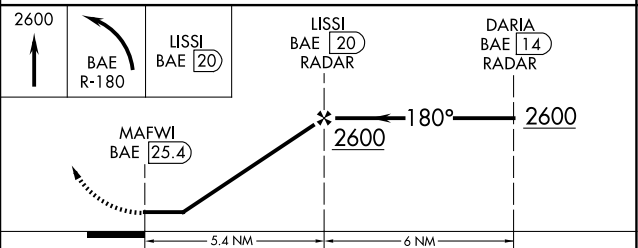
AWOS-3 125.275	MILWAUKEE APP CON 135.875 307.0	GCO 121.725	UNICOM 123.05 (CTAF) 0
--------------------------	---	-----------------------	----------------------------------

Procedure NA for arrival on BAE VOR/DME airway radials 119 CW 226.



MIRL Rwy 11-29 REIL Rwys 11 and 29

FAF to MAP	5.4 NM				
Knots	60	90	120	150	180
Min:Sec	5:24	3:36	2:42	2:10	1:48



CATEGORY	A	B	C	D
CIRCLING	1400-1	620 (700-1)	1400-1¾ 620 (700-1¾)	1560-2½ 780 (800-2½)

EC-3, 20 FEB 2025 to 20 MAR 2025

EC-3, 20 FEB 2025 to 20 MAR 2025