

| | | |
|--|------------------------|---|
| WAAS CH 82114 W18A | APP CRS 180° | Rwy Idg 3200 TDZE 295 Apt Elev 296 |
|--|------------------------|---|

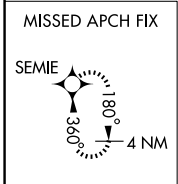
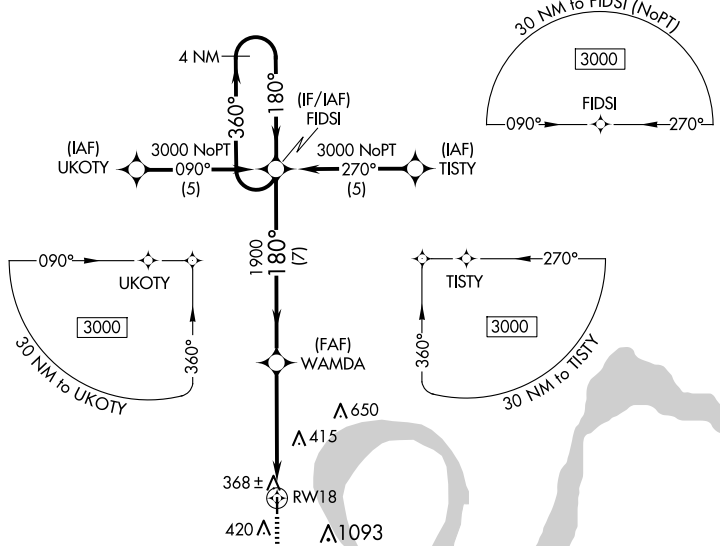
RNAV (GPS) RWY 18

COUNTY MEML (EIW)

▼ Circling to Rwy 36 NA at night. Baro-VNAV NA. DME/DME RNP-0.3 NA.
▲ NA Visibility reduction by helicopters NA. Use Dyersburg altimeter setting; when not received, use Cairo altimeter setting and increase all DA 5 feet and all MDA 20 feet.

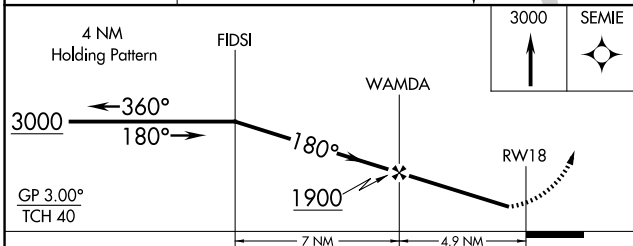
MISSED APPROACH: Climb to 3000 direct SEMIE and hold.

| | | |
|--------------------------------|--|---------------------------------|
| DYR AWOS-3PT 135.625 | MEMPHIS CENTER 133.65 292.15 | UNICOM 122.8 (CTAF) 0 |
|--------------------------------|--|---------------------------------|



| | |
|----------|----------|
| ELEV 296 | TDZE 295 |
|----------|----------|

Vertical profile diagram showing altitude from 36 to 81 feet and distance from 3200 x 60 to RWY 18. A 180° turn to RWY 18 is indicated.



| CATEGORY | A | B | C | D |
|--------------|----------------------|----------------------|---|----|
| LPV DA | 628-1¼ | 333 (400-1¼) | | NA |
| LNAV/VNAV DA | 1016-2½ | 721 (800-2½) | | NA |
| LNAV MDA | 800-1 | 505 (600-1) | | NA |
| CIRCLING | 860-1 564 (600-1) | 900-1 604 (700-1) | | NA |

NC-3, 20 FEB 2025 to 20 MAR 2025

NC-3, 20 FEB 2025 to 20 MAR 2025