

PORT LAVACA, TEXAS

AL-5904 (FAA)

23278

VORTAC PSX 117.3 Chan 120	APP CRS 244°	Rwy ldg TDZE Apt Elev N/A N/A 32
---	------------------------	--

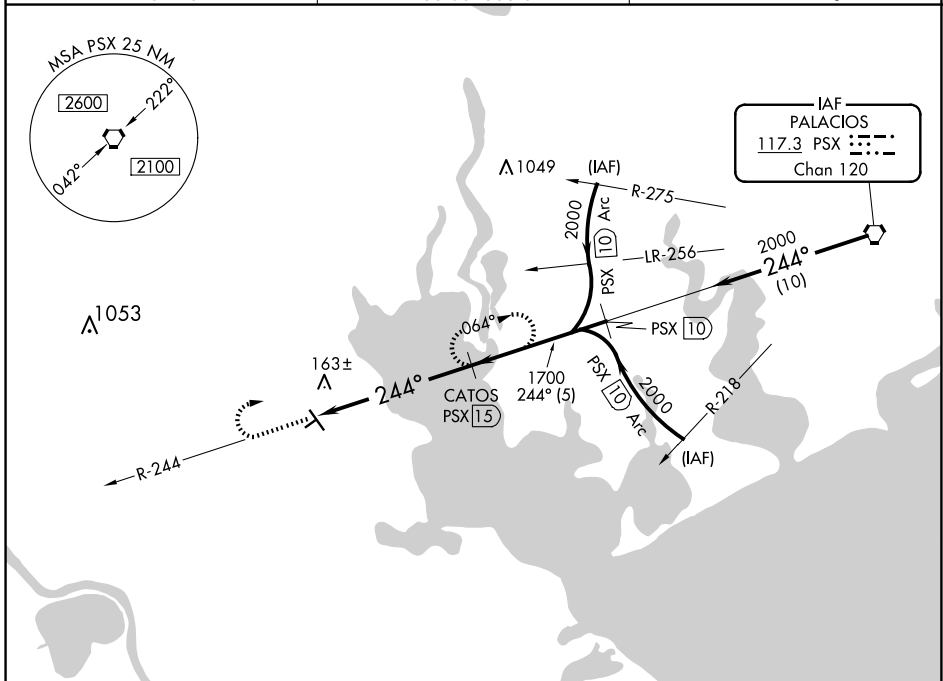
VOR/DME-A

CALHOUN COUNTY (PKV)

⚠ When local altimeter setting not received, use Victoria altimeter setting. Circling NA to Rwys 5 and 23. Night landing: Rwy 32 NA.

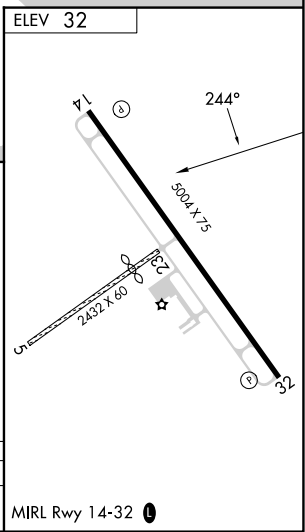
MISSED APPROACH: Climb to 2100, then right turn via PSX VORTAC R-244 to CATOS/PSX 15 DME and hold.

AWOS-3 118.275	HOUSTON CENTER 135.05 353.6	UNICOM 122.8 (CTAF)
--------------------------	---------------------------------------	-------------------------------



SC-5, 20 FEB 2025 to 20 MAR 2025

SC-5, 20 FEB 2025 to 20 MAR 2025



2100	PSX R-244	CATOS PSX 15
PSX 20.7	1700	1700
5.7 NM	5 NM	10 NM
PSX VORTAC	2000	Procedure Turn NA

CATEGORY	A	B	C	D
CIRCLING	760-1 728 (800-1)	760-1¼ 728 (800-1¼)	760-2 728 (800-2)	NA

PORT LAVACA, TEXAS
Amdt 4D 08OCT20

28°39'N-96°41'W

CALHOUN COUNTY (PKV)

VOR/DME-A