

VORTAC LCH 113.4 Chan 81	APP CRS 060°	Rwy Idg 2700 TDZE 18 Apt Elev 18
--	------------------------	---

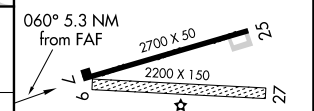
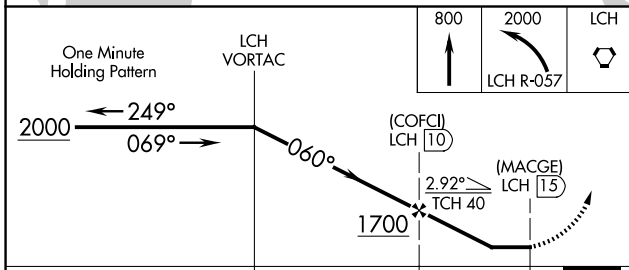
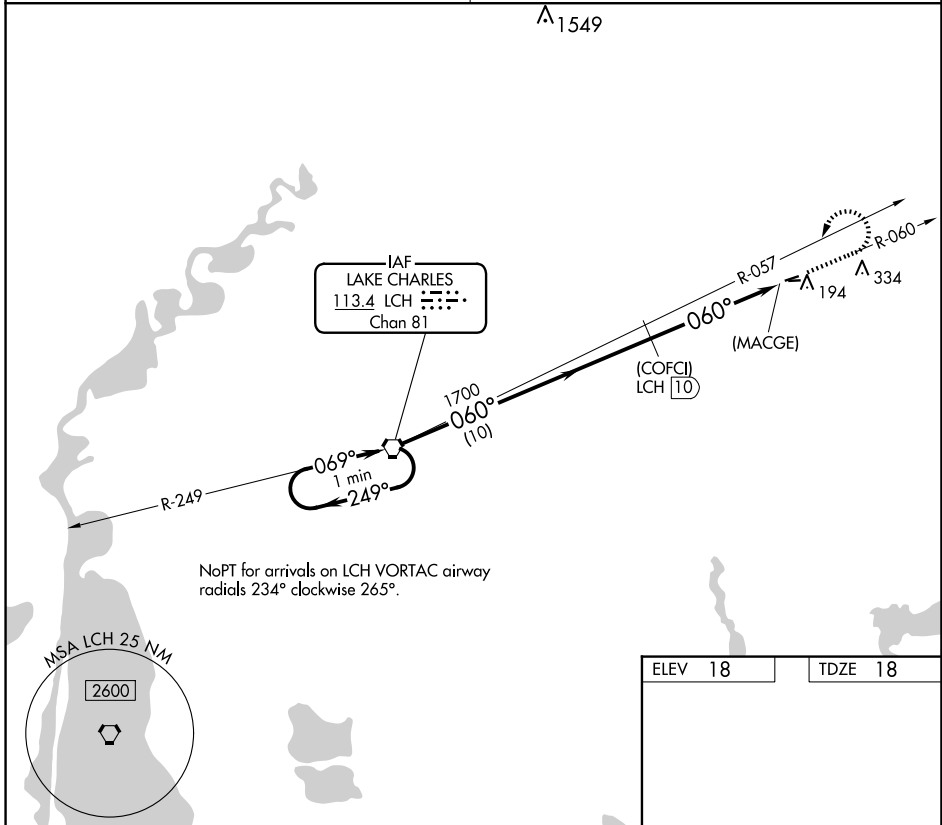
VOR/DME or GPS RWY 7

WELSH (6R1)

▼ Use Lake Charles altimeter setting. Procedure NA at night.
▲ NA Circling NA to Rwys 9 and 27.

MISSED APPROACH: Climb to 800 then climbing left turn to 2000 via LCH R-057 to LCH VORTAC.

LAKE CHARLES APP CON ★ 119.8 282.3	UNICOM 122.8 (CTAF)
--	-------------------------------



CATEGORY	A	B	C	D
S-7	540-1	522 (600-1)		NA
CIRCLING	600-1	582 (600-1)		NA

ELEV 18	TDZE 18
MIRL Rwy 7-25	

SC-4, 20 FEB 2025 to 20 MAR 2025

SC-4, 20 FEB 2025 to 20 MAR 2025