

WAAS CH <b>50403</b> <b>W16A</b>	APP CRS <b>158°</b>	Rwy Idg TDZE Apt Elev	<b>4500</b> <b>451</b> <b>462</b>
--	------------------------	-----------------------------	---

# RNAV (GPS) RWY 16

CREVE COEUR (1H0)

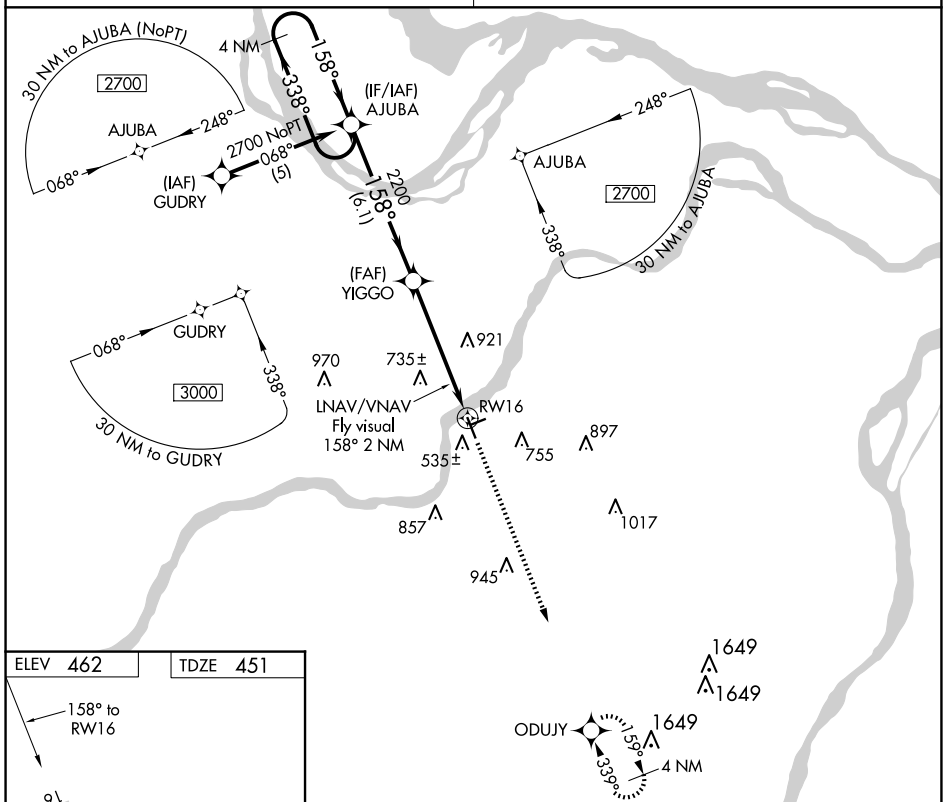
RNP APCH.

Baro-VNAV NA. Rwy 16 helicopter visibility reduction below 1 SM NA.  
 Use St Louis Lambert Intl altimeter setting. Straight-in Rwy 16 NA at night,  
 Circling Rwy 16 NA at night. Circling NA to Rwy 7 and 25.

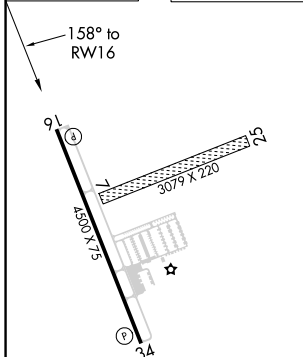
MISSED APPROACH: Climb to 2800  
 direct ODUJY and hold.

ST. LOUIS APP CON  
**126.5 254.3**

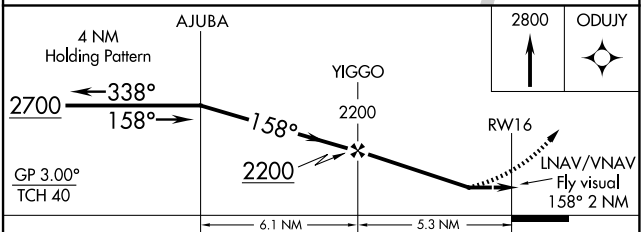
UNICOM  
**122.8 (CTAF) 0**



ELEV <b>462</b>	TDZE <b>451</b>
-----------------	-----------------



REIL Rwy 16 and 34 **0**  
 MIRL Rwy 16-34 **0**



CATEGORY	A	B	C	D
LPV DA	912-1¾	461 (500-1¾)		NA
LNAV/VNAV DA	1130-2	679 (700-2)		NA
LNAV MDA	1160-1	709 (700-1)		NA
CIRCLING	1160-1	698 (700-1)		NA

NC-3, 20 FEB 2025 to 20 MAR 2025

NC-3, 20 FEB 2025 to 20 MAR 2025