

WAAS CH <b>93905</b> <b>W34A</b>	APP CRS <b>338°</b>	Rwy Idg <b>4500</b> TDZE <b>462</b> Apt Elev <b>462</b>
--	------------------------	---

# RNAV (GPS) RWY 34

CREVE COEUR (1H0)

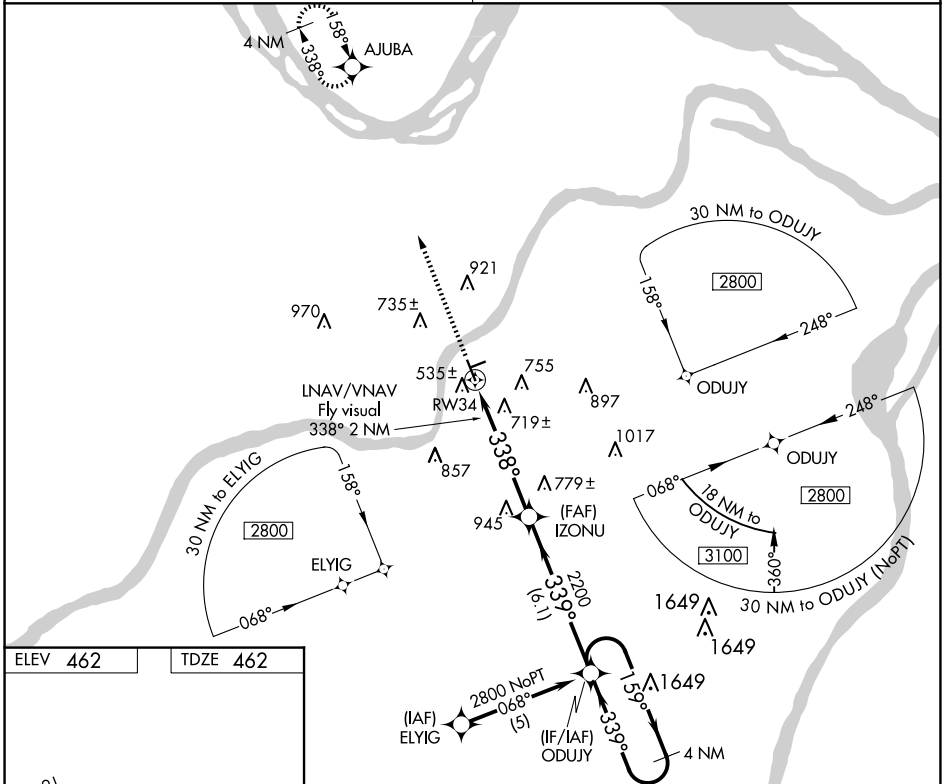
RNP APCH.

**▼** Use St Louis Lambert Intl altimeter setting. Baro-VNAV NA. Circling Rwy 16 NA at night.  
**▲NA** Circling NA to Rws 7 and 25. Rwy 34 helicopter visibility reduction below 3/4 SM NA.

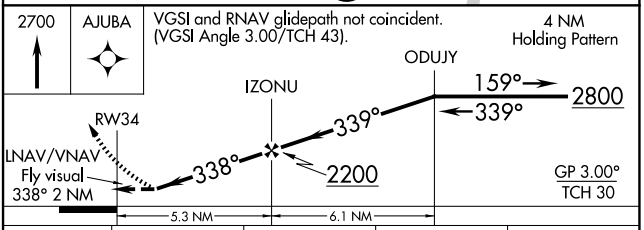
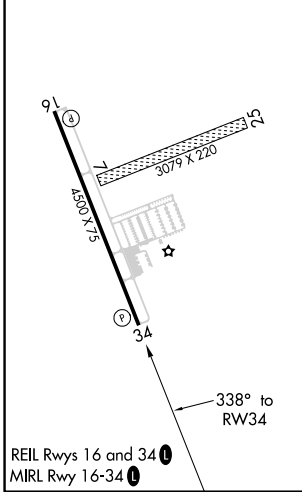
**MISSED APPROACH:**  
Climb to 2700 direct AJUBA and hold.

ST. LOUIS APP CON  
**126.5 254.3**

UNICOM  
**122.8 (CTAF) 0**



ELEV 462	TDZE 462
----------	----------



CATEGORY	A	B	C	D
LPV DA	809-1 1/4	347 (400-1 1/4)		NA
LNAV/VNAV DA	1131-2	669 (700-2)		NA
LNAV MDA	1080-1	618 (700-1)		NA
CIRCLING	1080-1	1120-1		NA
	618 (700-1)	658 (700-1)		

NC-3, 20 FEB 2025 to 20 MAR 2025

NC-3, 20 FEB 2025 to 20 MAR 2025