

LOC I-HER <b>110.5</b>	APP CRS <b>342°</b>	Rwy ldg <b>5003</b>
		TDZE <b>121</b>
		Apt Elev <b>121</b>

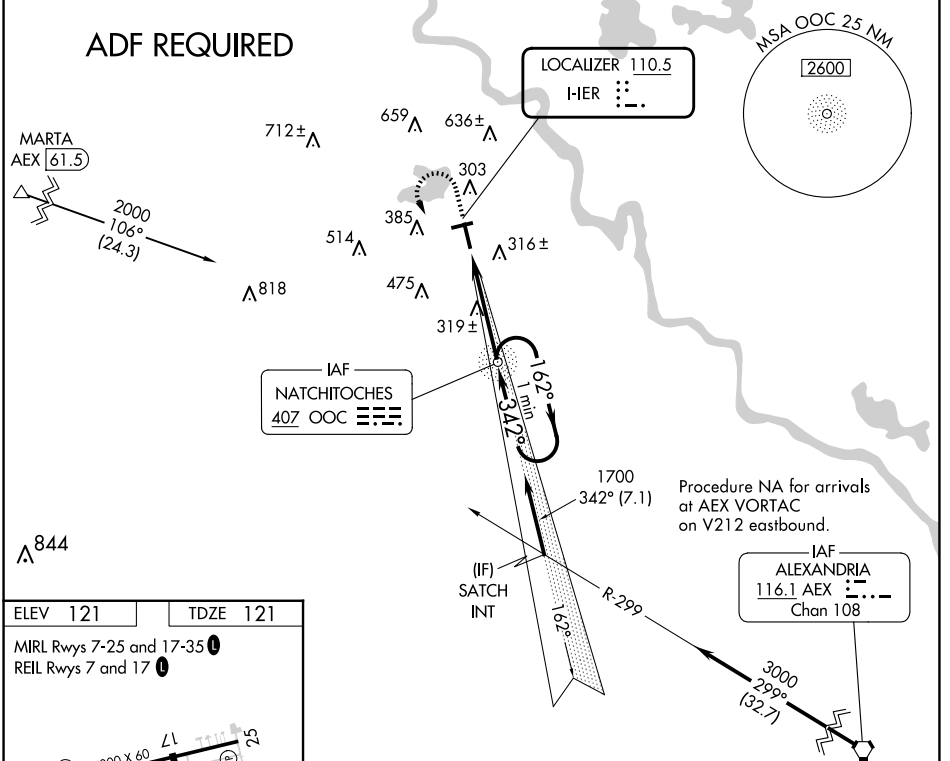
# LOC RWY 35

NATCHITOCHE RGNL (I.E.R)

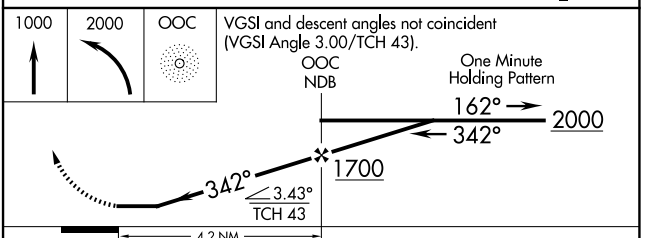
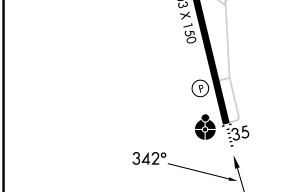
**NA** Helicopter visibility reduction below ¼ SM NA. When local altimeter setting not received, use Alexandria Intl altimeter setting: increase all MDA 100 feet and S-35 Cat C visibility ¼ SM and Circling Cat C visibility ½ SM. For inop ODALS when using Alexandria Intl altimeter setting, increase S-35 Cat C visibility ½ mile. Inop table does not apply to S-35 Cat A/B. ADF required.

**ODALS** MISSED APPROACH: Climb to 1000 then climbing left turn to 2000 direct OOC NDB and hold.

AWOS-3 <b>119.025</b>	POLK APP CON <b>125.4 302.2</b>	GCO <b>135.075</b>	UNICOM <b>122.8(CTAF) 0</b>
--------------------------	------------------------------------	-----------------------	--------------------------------



ELEV <b>121</b>	TDZE <b>121</b>
MIRL Rwy 7-25 and 17-35	REL Rwy 7 and 17



	FAF to MAP 4.2 NM				
Knots	60	90	120	150	180
Min:Sec	4:12	2:48	2:06	1:41	1:24
CATEGORY	A	B	C	D	
S-35	580-1	459 (500-1)	580-1½ 459 (500-1½)	NA	
CIRCLING	680-1 559 (600-1)	740-1 619 (700-1)	860-2 739 (800-2)	NA	