

NDB OOC <b>407</b>	APP CRS <b>343°</b>	Rwy Idg <b>5003</b>
		TDZE <b>121</b>
		Apt Elev <b>121</b>

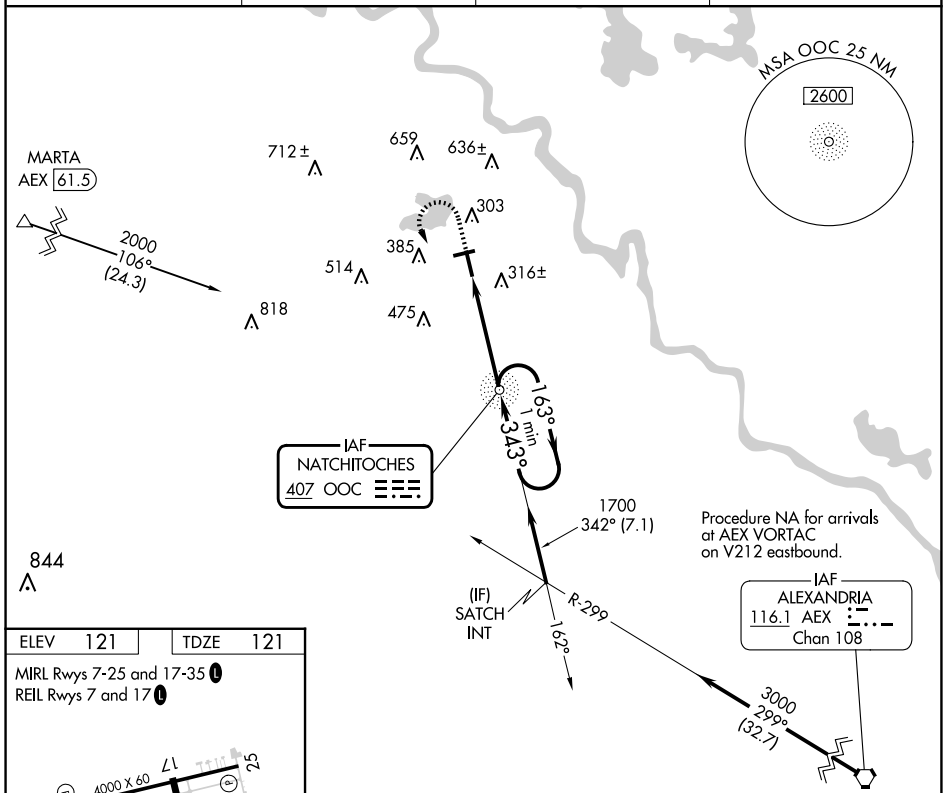
# NDB RWY 35

NATCHITOCHE RGNL (IER)

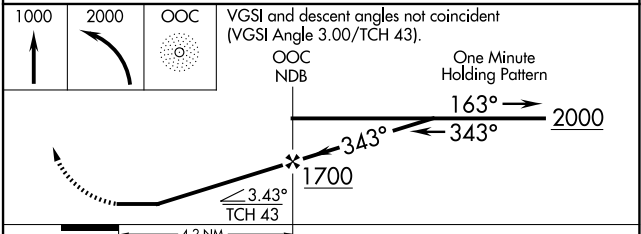
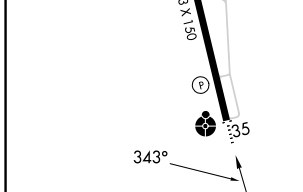
**▼** Helicopter visibility reduction below 3/4 SM NA. When local altimeter setting not received, use Alexandria Intl altimeter setting: Increase all MDA 100 feet and S-35 Cat C visibility 1/8 SM and Circling Cat C visibility 1/2 SM. For inoperative ODALS increase S-35 Cat C visibility 1/8 mile. Inoperative table does not apply to S-35 Cat A/B.

**▲NA** MISSED APPROACH: Climb to 1000 then climbing left turn to 2000 direct OOC NDB and hold.

AWOS-3 <b>119,025</b>	POLK APP CON <b>125.4 302.2</b>	GCO <b>135,075</b>	UNICOM <b>122.8(CTAF) 0</b>
--------------------------	------------------------------------	-----------------------	--------------------------------



ELEV 121	TDZE 121
MIRL Rwy 7-25 and 17-35	
REIL Rwy 7 and 17	



FAF to MAP 4.2 NM					
Knots	60	90	120	150	180
Min:Sec	4:12	2:48	2:06	1:41	1:24

CATEGORY	A	B	C	D
S-35	720-1	599 (600-1)	720-1 1/2 599 (600-1 1/2)	NA
CIRCLING	720-1 599 (600-1)	740-1 619 (700-1)	860-2 739 (800-2)	NA

SC-4, 20 FEB 2025 to 20 MAR 2025

SC-4, 20 FEB 2025 to 20 MAR 2025