

| | | | |
|--|------------------------|-----------------------------|---------------------------------------|
| WAAS CH 93810 W23A | APP CRS 225° | Rwy Idg TDZE Apt Elev | 4800 37 37 |
|--|------------------------|-----------------------------|---------------------------------------|

RNAV (GPS) RWY 23

WASHINGTON-WARREN (OCW)

RNP APCH-GPS.

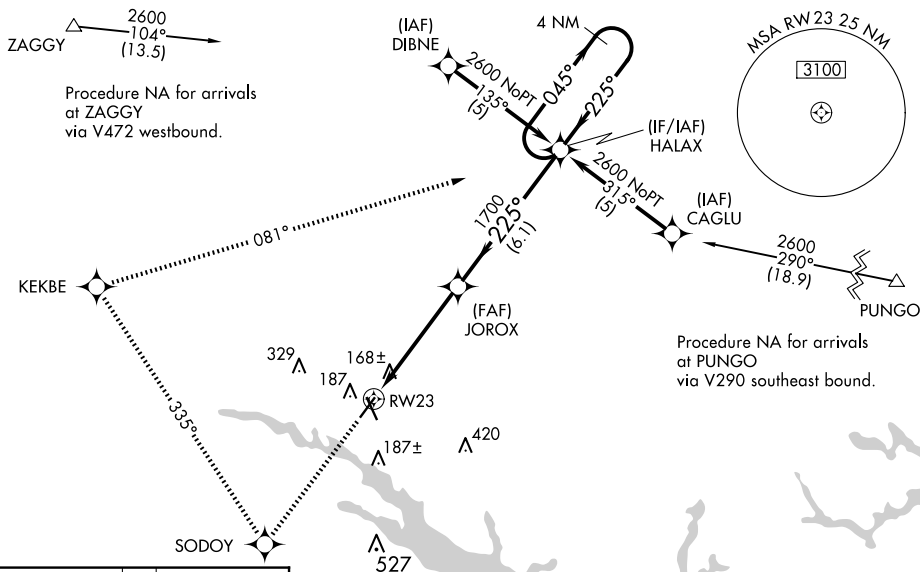
⚠ Baro-VNAV and VDP NA when using Greenville altimeter setting. For uncompensated Baro-VNAV systems, LNAV/VNAV NA below -15°C or above 54°C. When local altimeter setting not received, use Greenville altimeter setting: increase LPV DA to 478 feet and visibility 1/4 SM, and LNAV/VNAV DA to 515 feet and visibility 1/8 SM; increase all MDAs 60 feet and visibility LNAV Cat C/D 1/4 SM. Circling Rwy 17 NA at night.

MISSED APPROACH: Climb to 2600 direct SODOY and right turn via 335° track to KEKBE and right turn via 081° track to HALAX and hold.

AWOS-3
120.175

CHERRY POINT APP CON
119.35 377.175

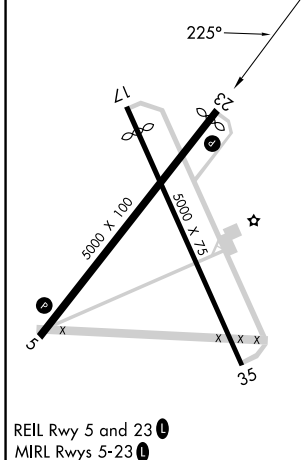
UNICOM
122.7 (CTAF) 0



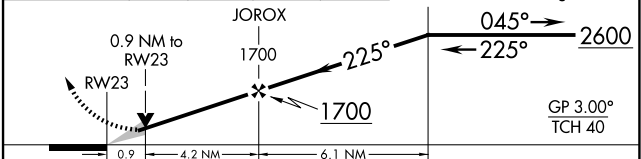
SE-2, 20 FEB 2025 to 20 MAR 2025

SE-2, 20 FEB 2025 to 20 MAR 2025

| | |
|---------|---------|
| ELEV 37 | TDZE 37 |
|---------|---------|



| | | | | |
|------|-------|--------|--------|---|
| 2600 | SODOY | KEKBE | HALAX | VGSI and RNAV glidepath not coincident (VGSI Angle 3.75/TCH 45). 4 NM Holding Pattern |
| ↑ | ✦ | ↪ 335° | ↪ 081° | ✦ |



| CATEGORY | A | B | C | D |
|--------------|-------|-------------|------------------------------|------------------------------|
| LPV DA | | 436-1 1/8 | 399 (400-1 1/8) | |
| LNAV/VNAV DA | | 473-1 1/4 | 436 (500-1 1/4) | |
| LNAV MDA | 420-1 | 383 (400-1) | 420-1 1/8 | 383 (400-1 1/8) |
| CIRCLING | 540-1 | 503 (600-1) | 640-1 3/4 603 (700-1 3/4) | 780-2 1/2 743 (800-2 1/2) |