

WAAS CH 42810 W05A	APP CRS 045°	Rwy Idg TDZE Apt Elev	5000 35 37
--	------------------------	-----------------------------	---------------------------------------

RNAV (GPS) RWY 5

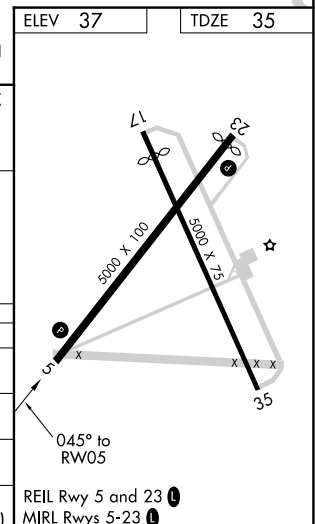
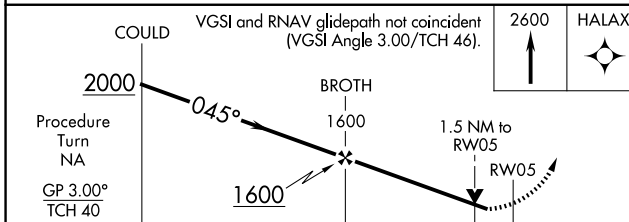
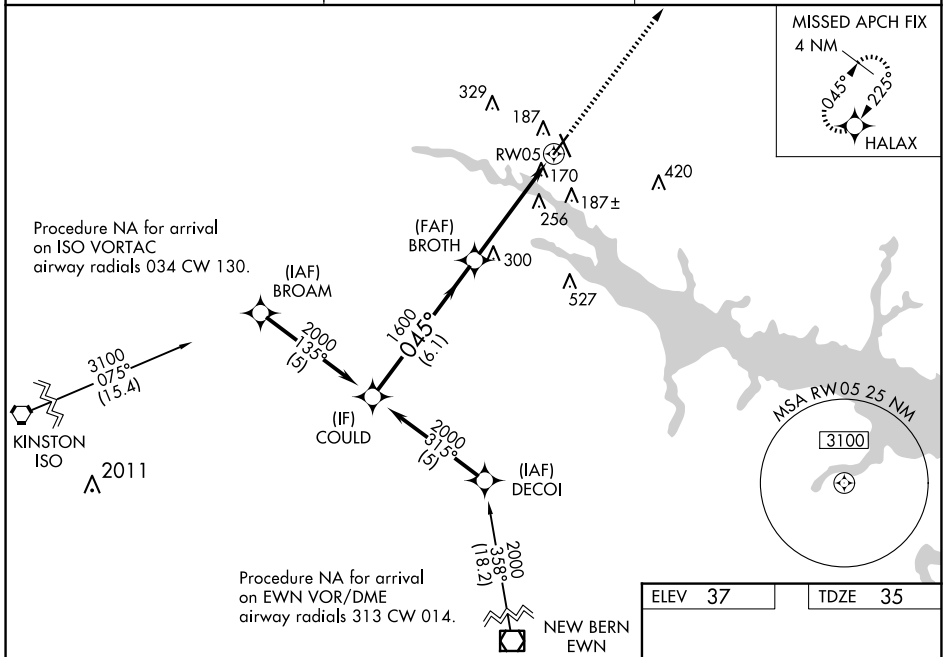
WASHINGTON-WARREN (OCW)

RNP APCH-GPS.

⚠ Circling Rwy 17 NA at night. Baro-VNAV and VDP NA when using Greenville altimeter setting.
 ⚠ For uncompensated Baro-VNAV systems, LNAV/VNAV NA below -15°C or above 54°C.
 Rwy 5 helicopter visibility reduction below 3/4 SM NA. When local altimeter setting not received, use Greenville altimeter setting: increase LPV DA to 484 feet and visibility 1/4 SM, and LNAV/VNAV DA to 519 feet; increase all MDAs 60 feet and visibility LNAV Cat C/D 1/2 SM.

MISSED APPROACH:
Climb to 2600 direct HALAX and hold.

AWOS-3 120.175	CHERRY POINT APP CON 119.35 377.175	UNICOM 122.7 (CTAF)
--------------------------	---	-------------------------------



CATEGORY	A	B	C	D
LPV DA		442-1 3/8	407 (500-1 1/8)	
LNAV/VNAV DA		477-1 3/8	442 (500-1 3/8)	
LNAV MDA	560-1	525 (600-1)	560-1 1/2	525 (600-1 1/2)
CIRCLING	560-1	523 (600-1)	640-1 1/4 603 (700-1 1/4)	780-2 1/2 743 (800-2 1/2)

SE-2, 20 FEB 2025 to 20 MAR 2025

SE-2, 20 FEB 2025 to 20 MAR 2025