

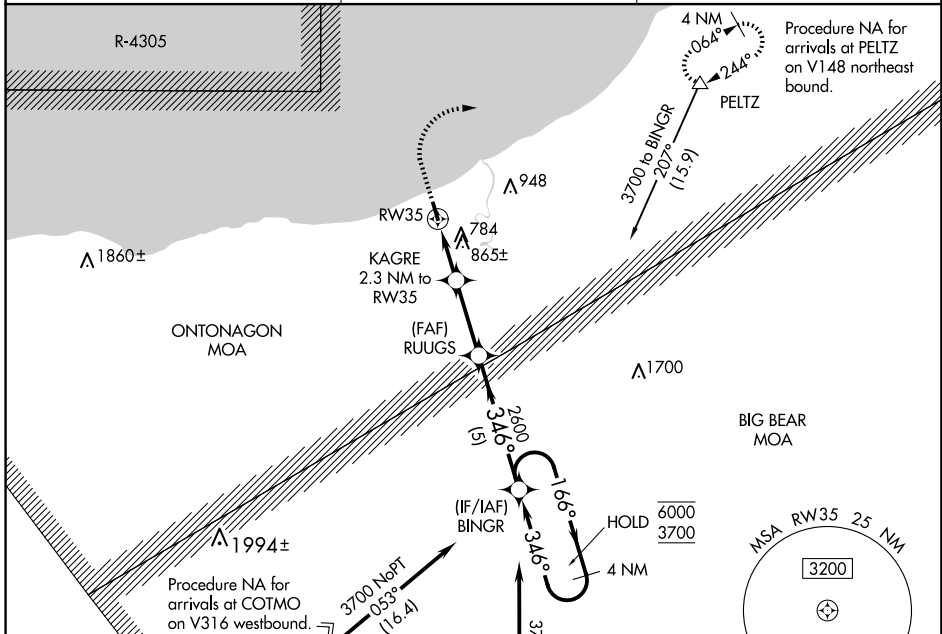
APP CRS	Rwy Idg	3503
346°	TDZE	665
	Apt Elev	665

RNAV (GPS) RWY 35

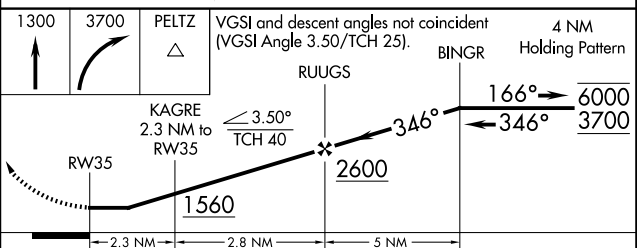
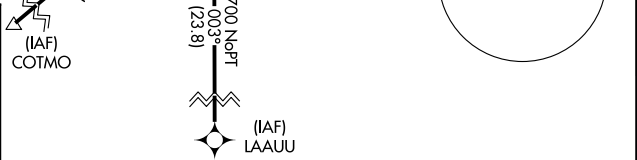
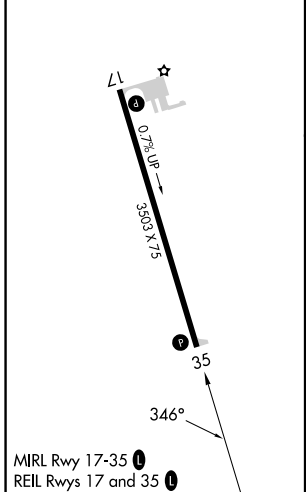
ONTONAGON COUNTY/SCHUSTER FLD (OGM)

RNP APCH - GPS.	MISSED APPROACH: Climb to 1300 then climbing right turn to 3700 direct PELTZ and hold, continue climb-in-hold to 3700.
<p>▼ Rwy 35 helicopter visibility reduction below 1 SM NA.</p> <p>▲ NA Procedure NA at night. Use CMX altimeter setting.</p>	

CMX ASOS 125.675	MINNEAPOLIS CENTER 133.55 379.1	CTAF 122.9
----------------------------	---	----------------------



ELEV 665	TDZE 665
----------	----------



CATEGORY	A	B	C	D
LNAV MDA	1280-1	615 (700-1)	1280-1¾ 615 (700-1¾)	NA
C CIRCLING	1320-1	655 (700-1)	1420-2¼ 755 (800-2¼)	NA

EC-1, 20 FEB 2025 to 20 MAR 2025

EC-1, 20 FEB 2025 to 20 MAR 2025