

APP CRS	Rwy Idg	<b>3494</b>
<b>358°</b>	TDZE	<b>210</b>
	Apt Elev	<b>210</b>

# RNAV (GPS) RWY 36

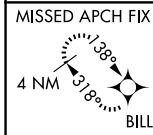
ALMYRA MUNI (M73)

RNP APCH.

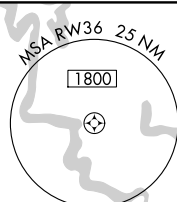
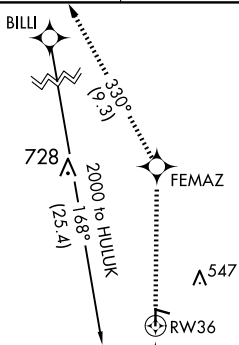
Use Stuttgart altimeter setting; if not received, use Pinebluff  
 NA Rgnl/Girder Fld altimeter setting and increase all MDAs 40 feet.

MISSED APPROACH: Climb to 2000 direct FEMAZ and via 330° track to BILLI and hold.

SGT AWOS-3PT <b>119.025</b>	LITTLE ROCK APP CON <b>119.85 353.6</b>	CLNC DEL <b>119.85</b>	UNICOM <b>123.0</b> (CTAF)
--------------------------------	--	---------------------------	-------------------------------

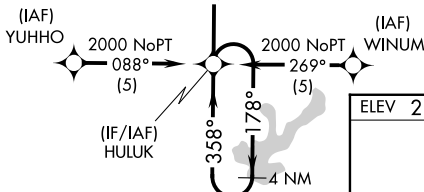
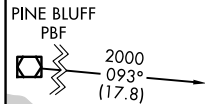


Procedure NA for arrival at BILLI via V69 northeast bound.

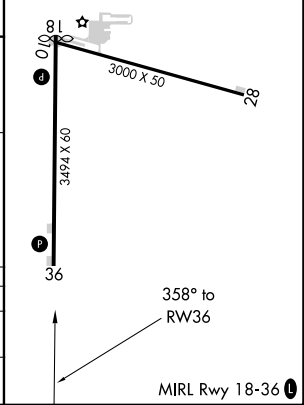
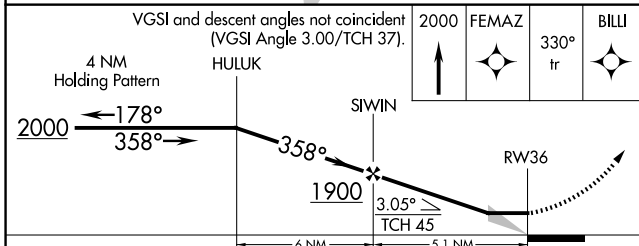


Procedure NA for arrival on UJM VOR/DME airway radials 193 CW 274.

Procedure NA for arrival on PBF VOR/DME airway radials 034 CW 128.



ELEV 210	TDZE 210
----------	----------



CATEGORY	A	B	C	D
LNVA MDA	680-1	470 (500-1)	680-1¼ 470 (500-1¼)	NA
CIRCLING	680-1 470 (500-1)	940-1 730 (800-1)	940-2 730 (800-2)	NA

SC-1, 20 FEB 2025 to 20 MAR 2025

SC-1, 20 FEB 2025 to 20 MAR 2025