

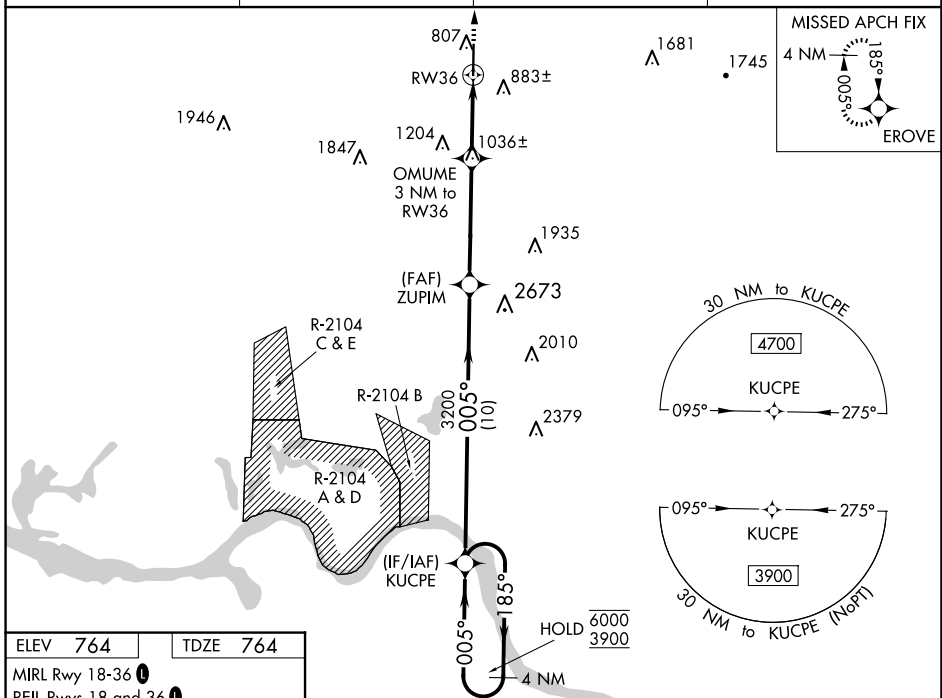
WAAS CH 53702 W36A	APP CRS 005°	Rwy Idg TDZE 764 Apt Elev 764	6500
--	------------------------	---	-------------

RNAV (GPS) RWY 36

HUNTSVILLE EXEC TOM SHARP JR FLD (MDQ)

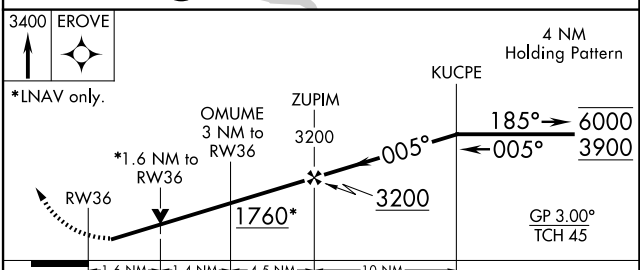
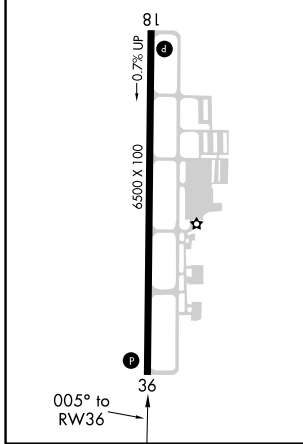
RNP APCH.	MISSED APPROACH: Climb to 3400 direct EROVE and hold.
For uncompensated Baro-VNAV systems, LNAV/VNAV NA below -16°C or above 54°C.	

AWOS-3PT 120.0	HUNTSVILLE APP CON* 125.6 354.1	GCO 121.725	UNICOM 123.0 (CTAF) 0
--------------------------	---	-----------------------	---------------------------------



ELEV 764	TDZE 764
-----------------	-----------------

MIRL Rwy 18-36
REIL Rwy 18 and 36



CATEGORY	A	B	C	D
LPV DA		964-3/4	200 (200-3/4)	
LNAV/VNAV DA		1250-1 5/8	486 (500-1 5/8)	
LNAV MDA	1300-1	536 (600-1)	1300-1 1/2	536 (600-1 1/2)
CIRCLING	1300-1	536 (600-1)	1560-2 1/4 796 (800-2 1/4)	2000-3 1236 (1300-3)

SE-4, 20 FEB 2025 to 20 MAR 2025

SE-4, 20 FEB 2025 to 20 MAR 2025