

| | | | |
|----------------------------------------|------------------------|-----------------------------|-------------------------------------------|
| WAAS CH 93737 W05A | APP CRS 050° | Rwy Idg TDZE Apt Elev | 6114 1015 1032 |
|----------------------------------------|------------------------|-----------------------------|-------------------------------------------|

RNAV (GPS) RWY 5

ALBARTVILLE RGNL/THOMAS J BRUMLIK FLD (8A0)

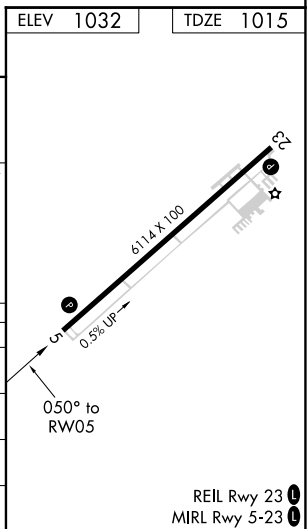
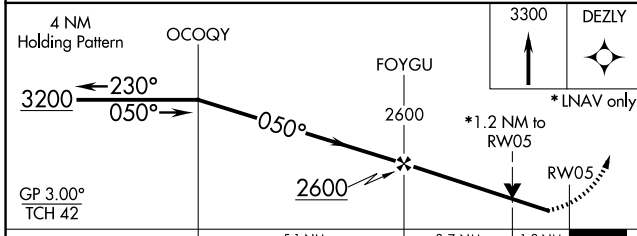
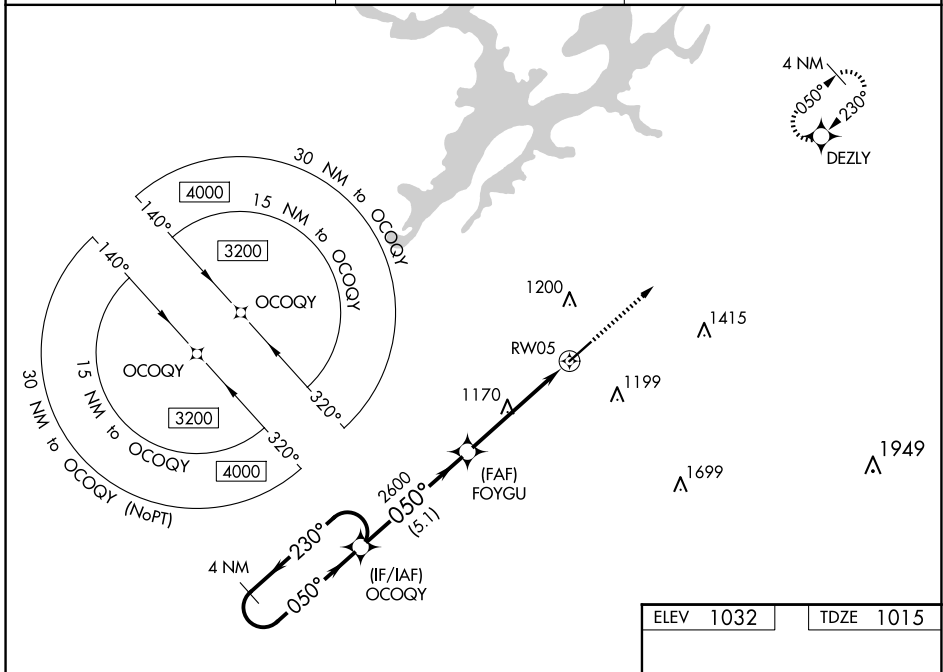
⚠ DME/DME RNP-0.3 NA. When local altimeter setting not received, use Huntsville Intl-Carl T Jones Fld altimeter setting and increase all DA 139 feet and all MDA 140 feet; increase LPV all Cats, LNAV/VNAV all Cats and LNAV Cats C and D visibility ½ mile. Increase Circling Cat C visibility ¼ mile and Cat D ½ mile. For uncompensated Baro-VNAV systems, LNAV/VNAV NA below -17°C (2°F) or above 54°C (130°F). Baro-VNAV and VDP NA when using Huntsville Intl-Carl T Jones Fld altimeter setting. Helicopter visibility reduction below ¾ SM NA.

MISSED APPROACH:
Climb to 3300 direct DEZLY and hold.

AWOS-3PT
119.575

BIRMINGHAM APP CON
125.45 279.65

UNICOM
123.0 (CTAF) **0**



| CATEGORY | A | B | C | D |
|-------------------|----------------------------|-----------------------|-------------------------------|-----------------------|
| LPV DA | 1265-7/8 250 (300-7/8) | | | |
| LNAV/VNAV DA | 1332-1 1/8 317 (300-1 1/8) | | | |
| LNAV MDA | 1420-1 405 (400-1) | | 1420-1 1/8 405 (400-1 1/8) | |
| C CIRCLING | 1480-1 448 (500-1) | 1500-1 468 (500-1) | 1500-1 1/2 468 (500-1 1/2) | 1680-2 648 (700-2) |

SE-4, 20 FEB 2025 to 20 MAR 2025

SE-4, 20 FEB 2025 to 20 MAR 2025