

WAAS CH <b>72706</b> W31A	APP CRS <b>313°</b>	Rwy Idg 5118
	TDZE 807	
	Apt Elev 808	

# RNAV (GPS) RWY 31

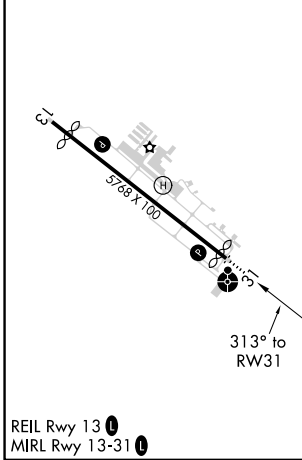
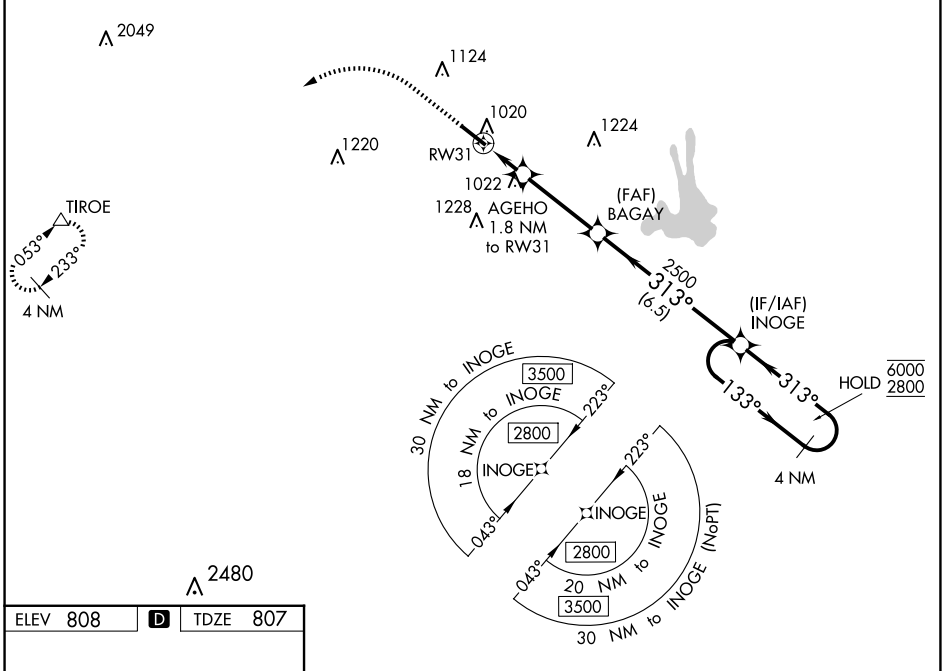
ATLANTA RGNL FALCON FLD (F'F'C)

RNP APCH.

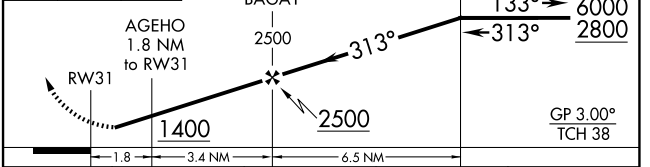
**⚠** Circling Rwy 13 NA at night. Rwy 31 helicopter visibility reduction below ¼ SM NA. Inop table does not apply to LPV. For inop ALS, increase LNAV/VNAV Cat A/B visibility to 1½ SM. For uncompensated Baro-VNAV systems, LNAV/VNAV NA below -7°C or above 54°C.

**ODALS** MISSED APPROACH: Climb to 1500 then climbing left turn to 3500 direct TIR0E and hold.

ASOS <b>118.525</b>	ATLANTA APP CON <b>119.8 354.125</b>	CLNC DEL <b>119.8</b>	UNICOM <b>123.05 (CTAF)</b>
------------------------	---	--------------------------	--------------------------------



1500 3500 TIR0E VGS1 and RNAV glidepath not coincident (VGS1 Angle 3.00/TCH 45). 4 NM INOGE Holding Pattern



CATEGORY	A	B	C	D
LPV DA		1059-¾	252 (300-¾)	
LNAV/VNAV DA		1188-1	381 (400-1)	
LNAV MDA	1280-¾	473 (500-¾)	1280-1¼	473 (500-1¼)
<b>C</b> CIRCLING	1320-1	512 (600-1)	1440-1¾ 632 (700-1¾)	1540-2¼ 732 (800-2¼)

SE-4, 20 FEB 2025 to 20 MAR 2025

SE-4, 20 FEB 2025 to 20 MAR 2025