

APP CRS	Rwy Idg	5000
095°	TDZE	882
	Apt Elev	882

RNAV (GPS) RWY 9

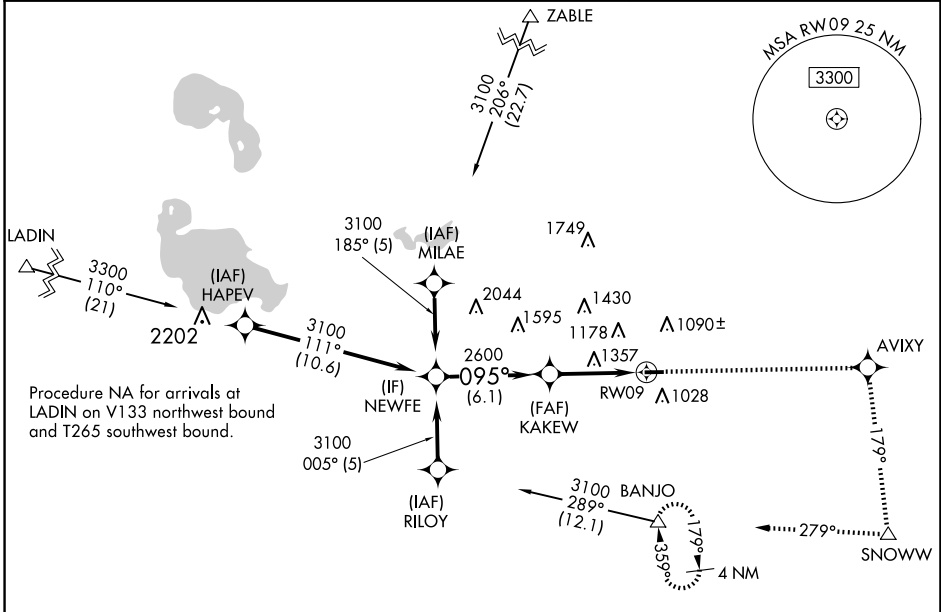
WEST BRANCH COMMUNITY (Y31)

RNP APCH - GPS.

▼ Rwy 9 helicopter visibility reduction below 1 SM NA. When local altimeter setting not received, use MBS Intl altimeter setting and increase all MDA 140 feet, increase LNAV Cat A visibility ¼ mile and Cat C/D ½ mile, increase Circling Cat A visibility ¼ mile and Cat C/D ½ mile. Straight-in Rwy 9 NA at night, Circling Rwy 9 NA at night.

▲ MISSED APPROACH: Climb to 4000 direct AVIXY and via track 179° to SNOWW and via track 279° to BANJO and hold.

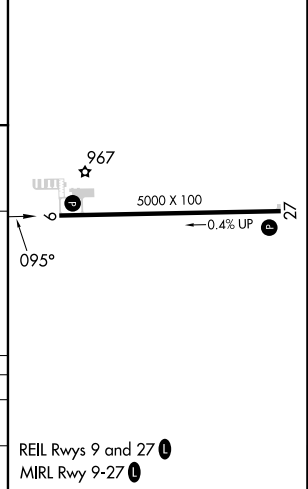
AWOS-3P 119.575	MINNEAPOLIS CENTER 125.475 269.45	UNICOM 122.8 (CTAF)
---------------------------	---	-------------------------------



Procedure NA for arrivals at LADIN on V133 northwest bound and T265 southwest bound.

ELEV 882	TDZE 882
----------	----------

Procedure Turn NA			tr 179°		tr 279°	
	NEWFE	4000	AVIXY	SNOWW	BANJO	
CATEGORY	A	B	C	D		
LNAV MDA	1660-1 778 (800-1)	1660-1¼ 778 (800-1¼)	1660-2¼ 778 (800-2¼)	1660-2½ 778 (800-2½)		
CIRCLING	1660-1 778 (800-1)	1660-1¼ 778 (800-1¼)	1660-2¼ 778 (800-2¼)	1740-2¾ 858 (900-2¾)		



REIL Rwy 9 and 27

MIRL Rwy 9-27

EC-1, 20 FEB 2025 to 20 MAR 2025

EC-1, 20 FEB 2025 to 20 MAR 2025