

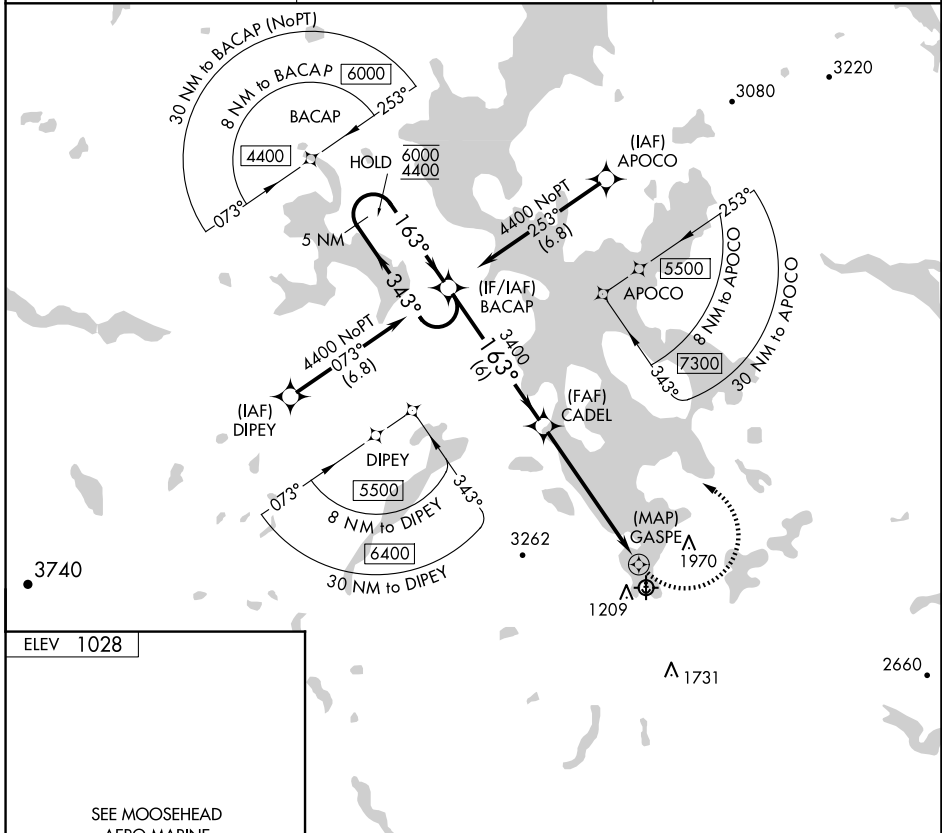
APP CRS	Rwy Idg	N/A
163°	TDZE	N/A
	Apt Elev	1028

RNAV (GPS)-B

MOOSEHEAD AERO MARINE (52B)

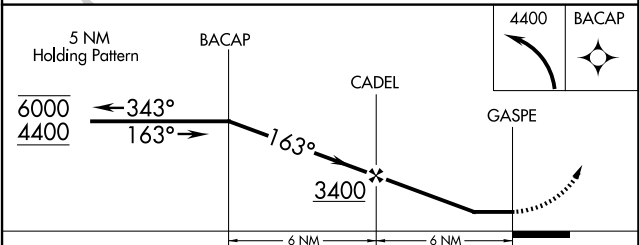
RNP APCH - GPS.	MISSED APPROACH: Climbing left turn to 4400 direct BACAP and hold.
<p>▼ Procedure NA at night. Use 3B1 altimeter setting; when not received, use BGR altimeter setting and increase all MDA 240 feet.</p> <p>⚠ NA</p> <p>❄ -22°C</p>	

3B1 AWOS-A 124.175	BOSTON CENTER 120.25 346.4	CTAF 122.9
------------------------------	--------------------------------------	----------------------



ELEV 1028

SEE MOOSEHEAD AERO MARINE SEAPLANE BASE LANDING CHART



CATEGORY	A	B	C	D
CIRCLING	2140-1¼ 1112 (1200-1¼)	2560-1½ 1532 (1600-1½)	2560-3 1532 (1600-3)	NA

NE-1, 20 FEB 2025 to 20 MAR 2025

NE-1, 20 FEB 2025 to 20 MAR 2025

24249

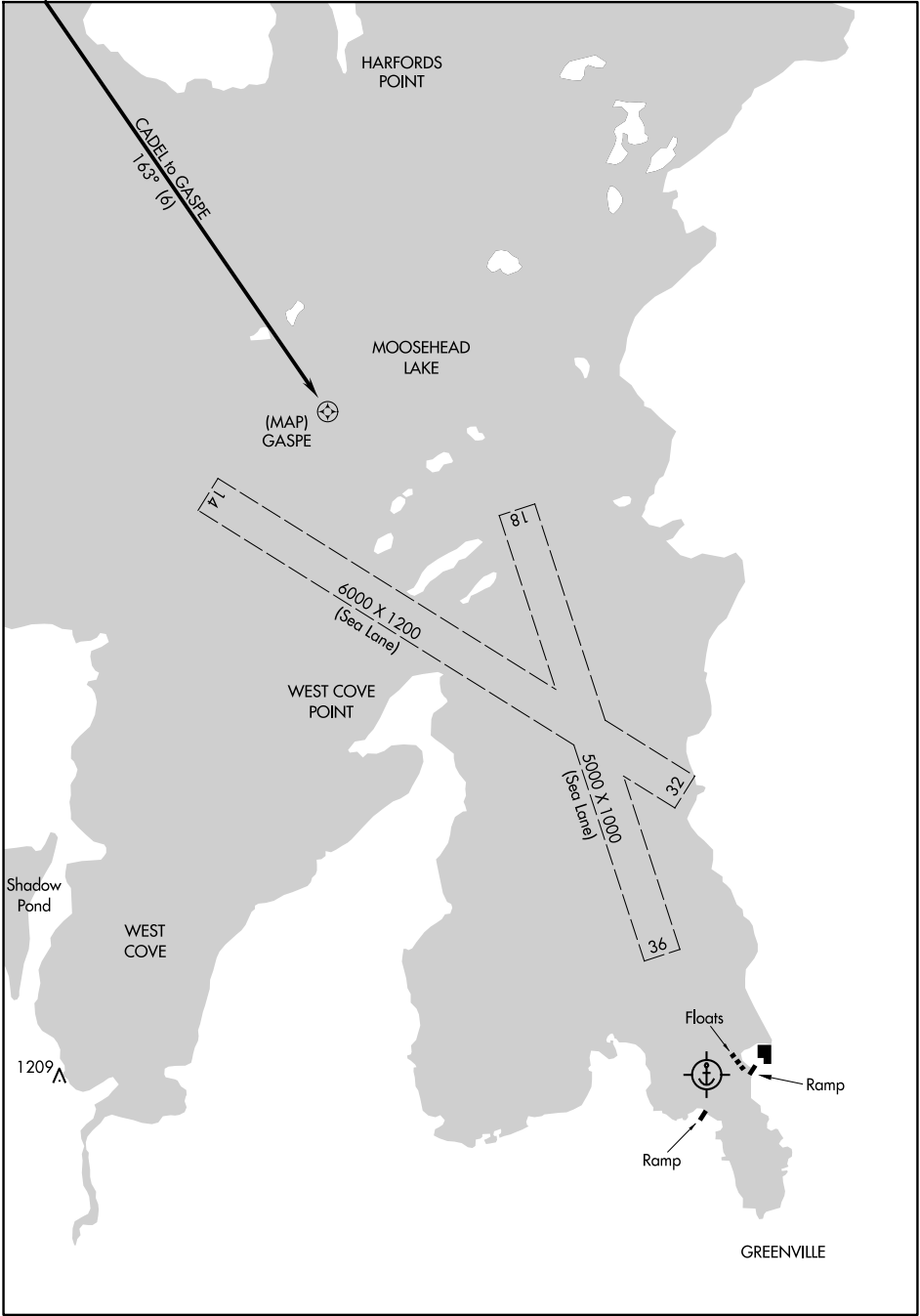
RNAV (GPS) -B LANDING

AL-5935 (FAA)

MOOSEHEAD AERO MARINE (52B)
GREENVILLE, MAINE

NE-1, 20 FEB 2025 to 20 MAR 2025

NE-1, 20 FEB 2025 to 20 MAR 2025



RNAV (GPS) -B LANDING

45°28'N-69°36'W

GREENVILLE, MAINE
MOOSEHEAD AERO MARINE (52B)

Amdt 1A 05SEP24