

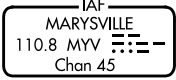
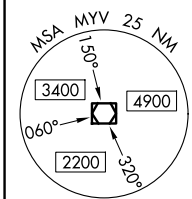
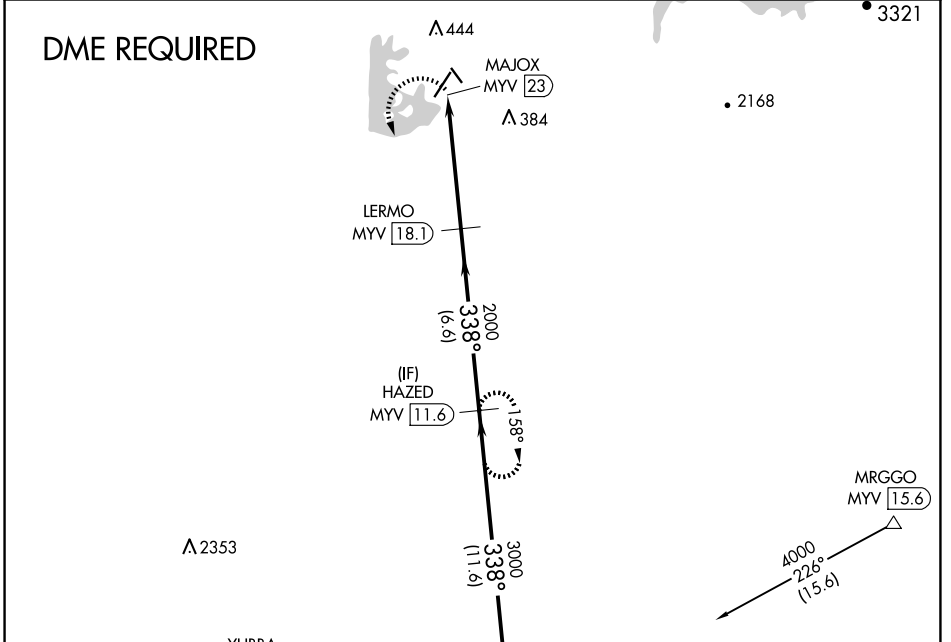
VOR/DME MYV 110.8 Chan 45	APP CRS 338°	Rwy Idg TDZE Apt Elev N/A N/A 194
---	------------------------	---

VOR-A
OROVILLE MUNI (OVE)

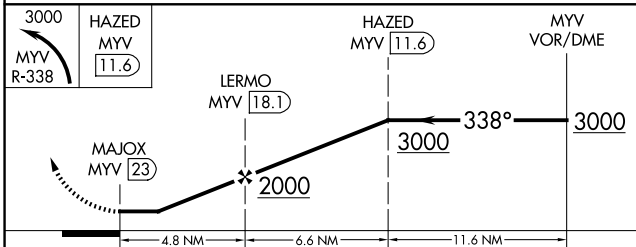
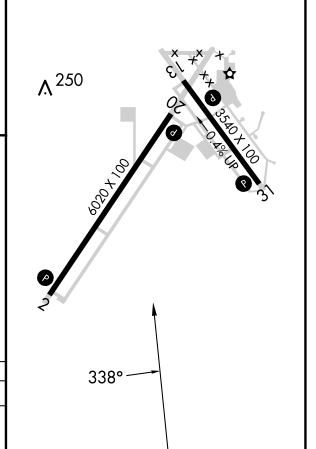
▼ Circling NA northeast of Rwy 13-31.
DME required.

MISSED APPROACH: Climbing left turn to 3000 on MYV
VOR/DME R-338 to HAZED/MYV 11.6 DME and hold.

ASOS 121.425	NORCAL APP CON 125.4 259.1	UNICOM 122.8 (CTAF) 0
------------------------	--------------------------------------	--



ELEV 194
REIL Rws 2 and 20
HIRL Rws 2-20 and 13-31



CATEGORY	A	B	C	D
CIRCLING	840-1 646 (700-1)		840-1 3/4 646 (700-1 3/4)	840-2 646 (700-2)

SW-2, 20 FEB 2025 to 20 MAR 2025

SW-2, 20 FEB 2025 to 20 MAR 2025