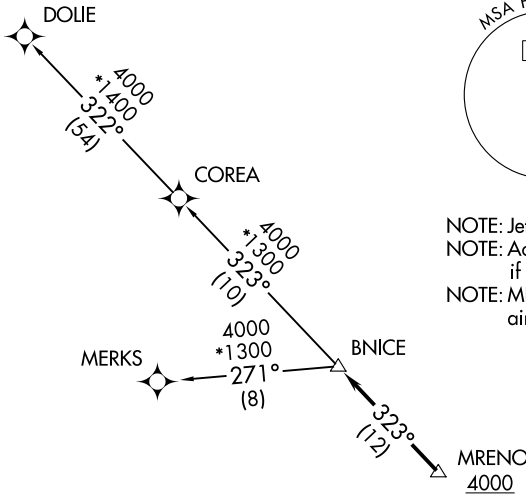


BNICE TWO DEPARTURE(RNAV)

RNAV 1 - DME/DME/IRU or GPS.
RADAR required for non-GPS equipped aircraft.

TOP ALTITUDE: ASSIGNED BY ATC
--

MIAMI DEP CON 126.05 251.1
 ATIS 119.85
 CLNC DEL 127.95
 GND CON 121.75
 EXECUTIVE TOWER 120.9 239.3



NOTE: Jet aircraft only.
 NOTE: Accelerate to 250K until leaving 10000, if unable, advise ATC.
 NOTE: MERKS Transition ATC assigned only except aircraft landing: MKY, RSW, APF, PGD, FMY.

TAKEOFF MINIMUMS

Rwys 9, 13, 27, 31: Standard with minimum climb of 500'/NM to 520.

NOTE: Chart not to scale.



DEPARTURE ROUTE DESCRIPTION

- TAKEOFF RUNWAY 9: Climb on heading 091° or as assigned by ATC, then...
- TAKEOFF RUNWAY 13: Climb on heading 136° or as assigned by ATC, then...
- TAKEOFF RUNWAY 27: Climb on heading 271° or as assigned by ATC, then...
- TAKEOFF RUNWAY 31: Climb on heading 316° or as assigned by ATC, then...

... for RADAR vectors to cross MRENO at or above 4000, then on track 323° to BNICE, then on assigned transition, maintain ATC assigned altitude, expect clearance to filed altitude within 10 minutes after departure.

- COREA TRANSITION (BNICE2.COREA)
- DOLIE TRANSITION (BNICE2.DOLIE)
- MERKS TRANSITION (BNICE2.MERKS)

BNICE TWO DEPARTURE(RNAV)