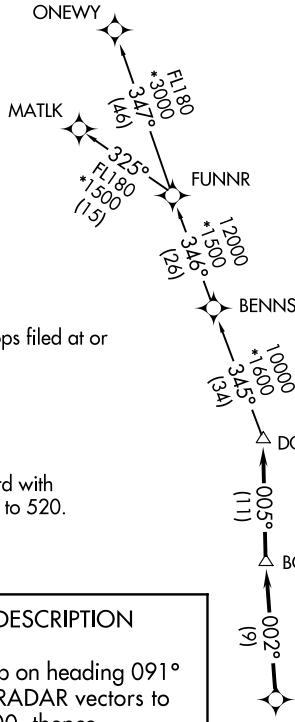
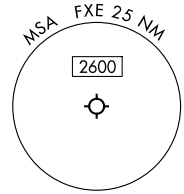


DORRL TWO DEPARTURE (RNAV)

MIAMI DEP CON
126.05 251.1
ATIS
119.85
CLNC DEL
127.95
GND CON
121.75
EXECUTIVE TOWER
120.9 239.3

**TOP ALTITUDE:
ASSIGNED BY ATC**

RNAV 1 - DME/DME/IRU or GPS.
RADAR required.



NOTE: For turbo-props/props filed at or above 13000.

TAKEOFF MINIMUMS

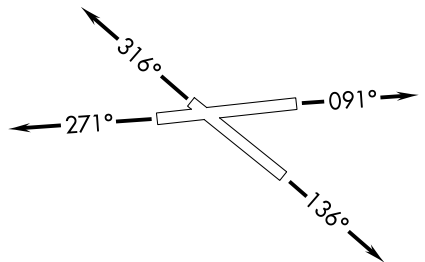
Rwys 9, 13, 27, 31: Standard with minimum climb of 500'/NM to 520.

DEPARTURE ROUTE DESCRIPTION

- TAKEOFF RUNWAY 9:** Climb on heading 091° or as assigned by ATC for RADAR vectors to cross LIFRR at or above 4000, thence. . . .
- TAKEOFF RUNWAY 13:** Climb on heading 136° or as assigned by ATC for RADAR vectors to cross LIFRR at or above 4000, thence. . . .
- TAKEOFF RUNWAY 27:** Climb on heading 271° or as assigned by ATC for RADAR vectors to cross LIFRR at or above 4000, thence. . . .
- TAKEOFF RUNWAY 31:** Climb on heading 316° or as assigned by ATC for RADAR vectors to cross LIFRR at or above 4000, thence. . . .

. . . .on track 002° to BOGY, then on track 005° to DORRL then on (transition), maintain altitude as assigned by ATC, expect filed altitude 10 minutes after departure.

MATLK TRANSITION (DORRL2.MATLK)
ONEWY TRANSITION (DORRL2.ONEWY)



NOTE: Chart not to scale.

SE-3, 20 FEB 2025 to 20 MAR 2025

SE-3, 20 FEB 2025 to 20 MAR 2025