

RADAR and DME required.

**TOP ALTITUDE:  
ASSIGNED BY ATC**

MIAMI DEP CON  
(For AARPS, BNICE, DORRL, FRSBE, HROCK, ZFP)  
126.05 251.1  
119.45 290.325  
(For BEECH-FLL departing east, MAYNR transition)  
(For BEECH-FLL departing west)  
126.05 251.1  
119.85  
GND CON  
121.75  
CLNC DEL  
127.95  
EXECUTIVE TOWER  
120.9 239.3

(FL12.FLL) 26DEC24

FORT LAUDERDALE TWO DEPARTURE

FORT LAUDERDALE, FLORIDA  
FORT LAUDERDALE EXEC (FXXE)

LEE COUNTY  
114.15 RSW  
Chan 88 (Y)

PALM BEACH  
115.7 PBI  
Chan 104

FREEPORT  
113.2 ZFP  
Chan 79

DOLPHIN  
113.9 DHP  
Chan 86

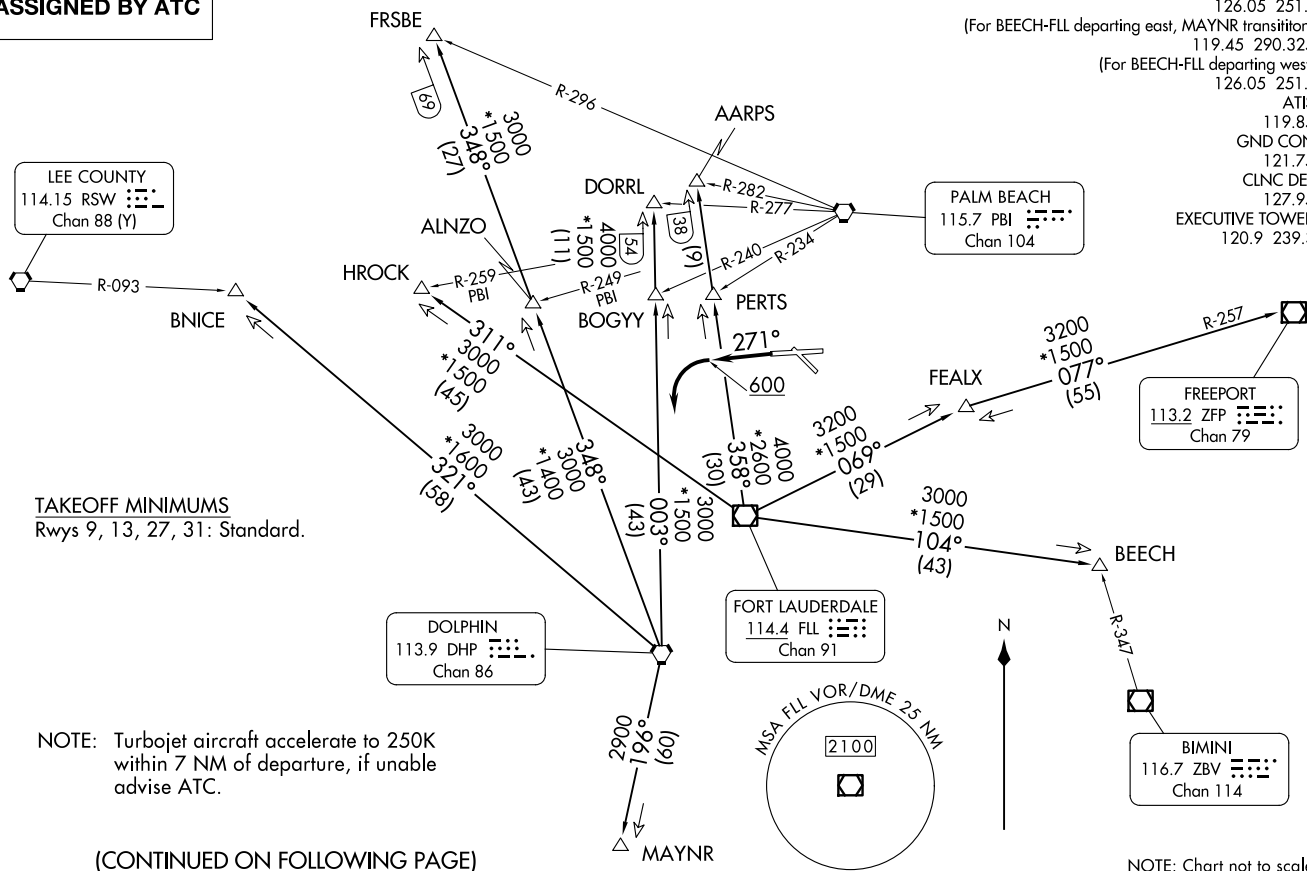
FORT LAUDERDALE  
114.4 FLL  
Chan 91

BIMINI  
116.7 ZBV  
Chan 114

TAKEOFF MINIMUMS  
Rwys 9, 13, 27, 31: Standard.

NOTE: Turbojet aircraft accelerate to 250K  
within 7 NM of departure, if unable  
advise ATC.

(CONTINUED ON FOLLOWING PAGE)



(FL12.FLL) 24361

FORT LAUDERDALE TWO DEPARTURE  
AL-5942 (FAA)

FORT LAUDERDALE EXEC (FXXE)  
FORT LAUDERDALE, FLORIDA

NOTE: Chart not to scale.

# FORT LAUDERDALE TWO DEPARTURE



## DEPARTURE ROUTE DESCRIPTION

TAKEOFF RUNWAYS 9, 13, 31: Climb on assigned heading, thence. . . .

TAKEOFF RUNWAY 27: Climb on heading 271° to 600 before turning left, then climb on assigned heading, thence. . . .

. . . .maintain ATC assigned altitude, expect RADAR vectors to appropriate transition. Expect further clearance to filed altitude ten (10) minutes after departure.

AARPS TRANSITION (FLL2.AARPS): From over FLL VOR/DME on FLL R-358 to AARPS.

BEECH TRANSITION (FLL2.BEECH): From over FLL VOR/DME on FLL R-104 to BEECH.

BNICE TRANSITION (FLL2.BNICE): From over DHP VORTAC on DHP R-321 to BNICE.

DORRL TRANSITION (FLL2.DORRL): From over DHP VORTAC on DHP R-003 to DORRL.

FEALX TRANSITION (FLL2.FEALX): From over FLL VOR/DME on FLL R-069 to FEALX.

FREEPORT TRANSITION (FLL2.ZFP): From over FLL VOR/DME on FLL R-069 to FEALX, then on ZFP R-257 to ZFP VOR/DME.

FRSBE TRANSITION (FLL2.FRSBE): From over DHP VORTAC on DHP R-348 to FRSBE.

HROCK TRANSITION (FLL2.HROCK): From over FLL VOR/DME on FLL R-311 to HROCK.

MAYNR TRANSITION (FLL2.MAYNR): From over DHP VORTAC on DHP R-196 to MAYNR.

SE-3, 20 FEB 2025 to 20 MAR 2025

SE-3, 20 FEB 2025 to 20 MAR 2025