

LOC I-FXE <b>111.1</b>	APP CRS <b>091°</b>	Rwy Idg <b>6002</b>
		TDZE <b>13</b>
		Apt Elev <b>13</b>

# ILS or LOC RWY 9

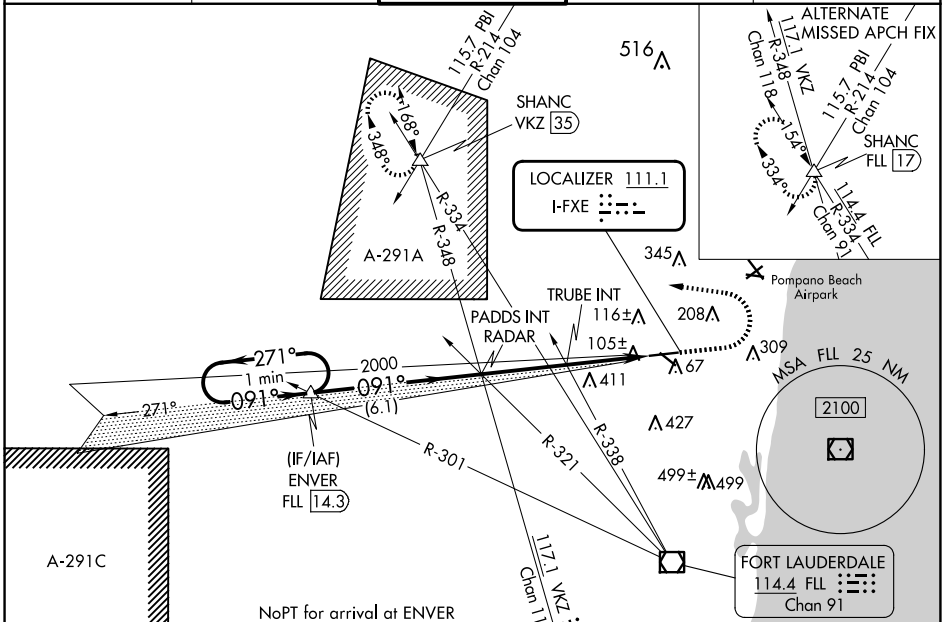
## FORT LAUDERDALE EXEC (FXE)

**⚠** When local altimeter setting not received, use Fort Lauderdale/Hollywood Intl altimeter setting and increase S-ILS 9 DA to 231 and increase all MDA 20 feet.

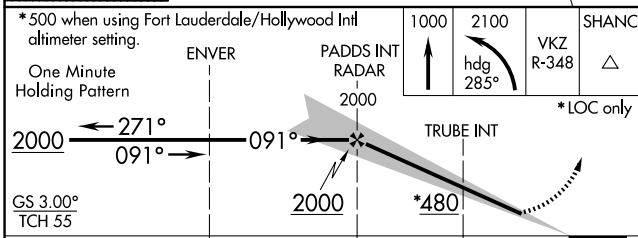
**MALSR** 

**MISSED APPROACH:** Climb to 1000 then climbing left turn to 2100 on heading 285° and on VKZ VOR/DME R-348 to SHANC INT/VKZ 35 DME and hold.

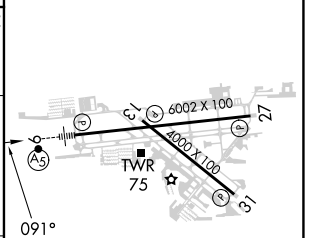
ATIS <b>119.85</b>	MIAMI APP CON <b>119.7 306.3</b>	<b>EXECUTIVE TOWER</b> <b>120.9 239.3</b>	GND CON <b>121.75</b>	CLNC DEL <b>127.95</b>
-----------------------	-------------------------------------	--	--------------------------	---------------------------



NoPT for arrival at ENVER on V267-437 southeast bound.



ELEV 13	TDZE 13
---------	---------



CATEGORY	A	B	C	D
S-ILS 9	213-½ 200 (200-½)			
S-LOC 9	480-½	467 (500-½)	480-1	467 (500-1)
CIRCLING	520-1	620-1	780-2¼	780-2½
	507 (600-1)	607 (700-1)	767 (800-2¼)	767 (800-2½)
TRUBE FIX MINIMUMS (DUAL VOR RECEIVERS REQUIRED)				
S-LOC 9	360-½	347 (400-½)	360-¾	347 (400-¾)
CIRCLING	520-1	620-1	780-2¼	780-2½
	507 (600-1)	607 (700-1)	767 (800-2¼)	767 (800-2½)

REIL Rwy 13, 27 and 31  
HIRL Rwy 9-27  
MIRL Rwy 13-31

FAF to MAP 6.1 NM

Knots	60	90	120	150	180
Min:Sec	6:06	4:04	3:03	2:26	2:02

SE-3, 20 FEB 2025 to 20 MAR 2025

SE-3, 20 FEB 2025 to 20 MAR 2025