

(LIFRR2.LIFRR) 24081

AL-5942 (FAA)

FORT LAUDERDALE EXEC (FXE)

FORT LAUDERDALE, FLORIDA

# LIFRR TWO DEPARTURE (RNAV)

RNAV 1 - DME/DME/IRU or GPS.

RADAR required for non-GPS equipped aircraft.

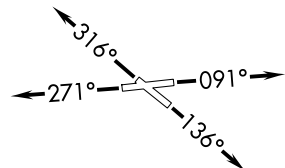
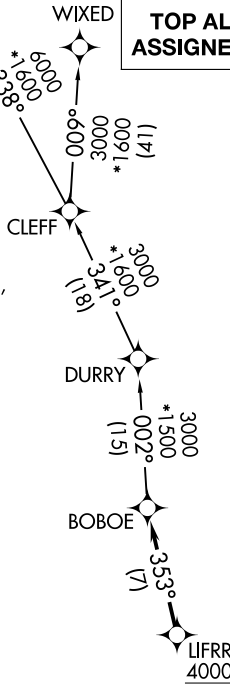
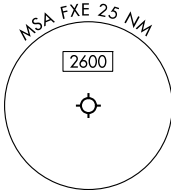
BAIRN

WIXED

**TOP ALTITUDE:  
ASSIGNED BY ATC**

MIAMI DEP CON 126.05 251.1  
 ATIS 119.85  
 CLNC DEL 127.95  
 GND CON 121.75  
 EXECUTIVE TOWER 120.9 239.3

NOTE: Accelerate to 250K until leaving 10000, if unable, advise ATC.  
 NOTE: Jet aircraft only.  
 NOTE: For aircraft filed at or below 12000.



### TAKEOFF MINIMUMS

Rwys 9, 13, 31: Standard.

Rwy 27: Standard with minimum climb of 500'/NM to 520.

NOTE: Chart not to scale.



### DEPARTURE ROUTE DESCRIPTION

TAKEOFF RUNWAY 9: Climb on heading 091° or as assigned by ATC, thence. . .

TAKEOFF RUNWAY 13: Climb on heading 136° or as assigned by ATC, thence. . .

TAKEOFF RUNWAY 27: Climb on heading 271° or as assigned by ATC, thence. . .

TAKEOFF RUNWAY 31: Climb on heading 316° or as assigned by ATC, thence. . .

. . .for RADAR vector to cross LIFRR at or above 4000, then on track 353° to BOBOE, then on assigned transition, maintain ATC assigned altitude, expect clearance to filed altitude within 10 minutes after departure.

BAIRN TRANSITION (LIFRR2.BAIRN)

WIXED TRANSITION (LIFRR2.WIXED)

# LIFRR TWO DEPARTURE (RNAV)

(LIFRR2.LIFRR) 21MAR24

FORT LAUDERDALE, FLORIDA

FORT LAUDERDALE EXEC (FXE)

SE-3, 20 FEB 2025 to 20 MAR 2025

SE-3, 20 FEB 2025 to 20 MAR 2025