

WAAS CH 53743 W10A	APP CRS 100°	Rwy Idg 5800 TDZE 795 Apt Elev 820
--	------------------------	---

RNAV (GPS) RWY 10

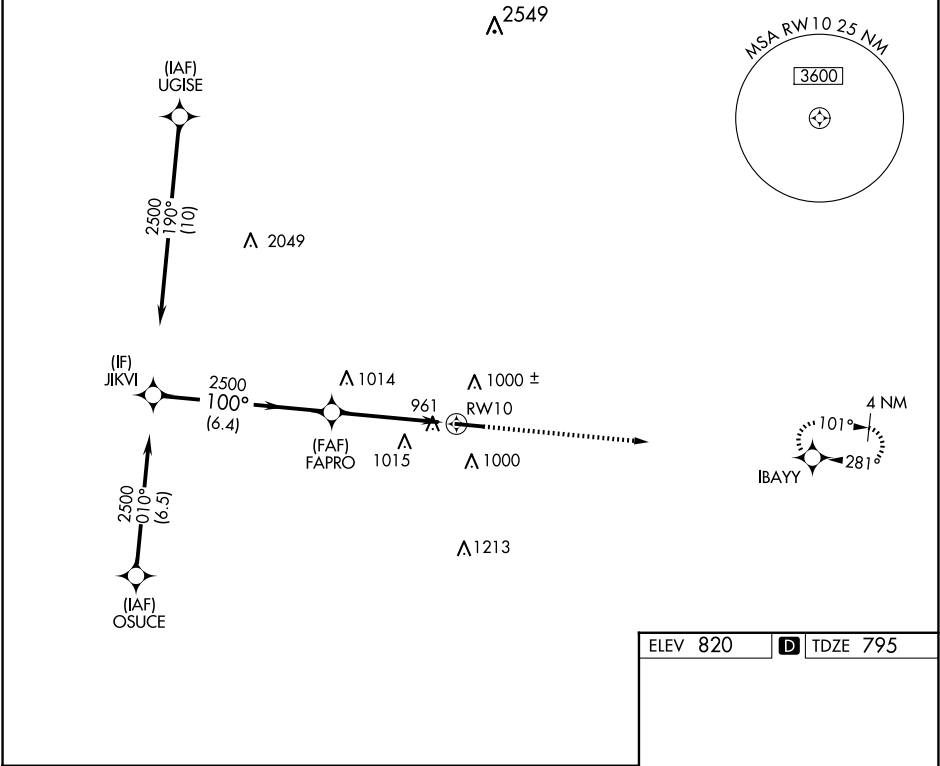
COVINGTON MUNI (CVC)

RNP APCH.

▼ Rwy 10 helicopter visibility reduction below 1 SM NA.
▲ Rwy 10 Straight-in and Circling minimums NA at night.

MISSED APPROACH: Climb to 2600 direct IBAYY and hold.

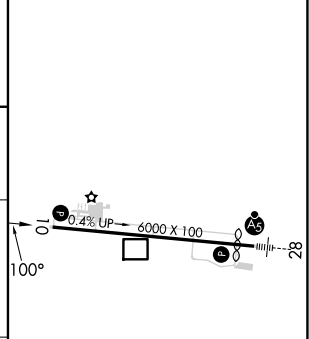
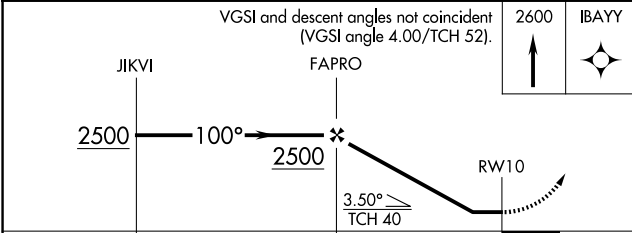
AWOS-3 118.725	ATLANTA APP CON 128.575 343.675	UNICOM 123.0 (CTAF) 0
--------------------------	---	---------------------------------



SE-4, 20 FEB 2025 to 20 MAR 2025

SE-4, 20 FEB 2025 to 20 MAR 2025

ELEV 820 **D** TDZE 795



CATEGORY	A	B	C	D
LP MDA	1220-1	425 (400-1)	1220-1¼	425 (400-1¼)
RNAV MDA	1220-1	425 (400-1)	1220-1¼	425 (400-1¼)
C CIRCLING	1320-1	500 (500-1)	1380-1½ 560 (600-1½)	1380-2 560 (600-2)

MIRL Rwy 10-28 0