

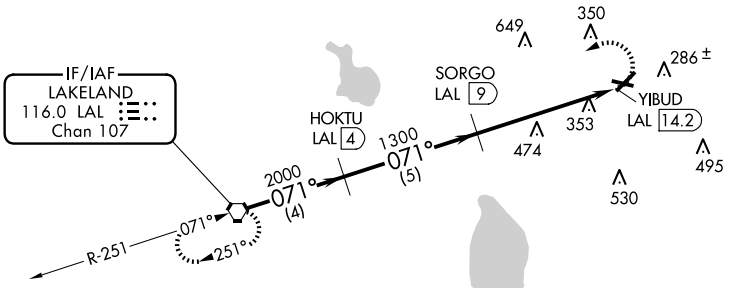
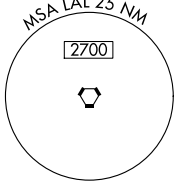
VORTAC LAL <b>116.0</b> Chan <b>107</b>	APP CRS <b>071°</b>	Rwy Idg TDZE Apt Elev	<b>N/A</b> <b>N/A</b> <b>146</b>
---	------------------------	-----------------------------	--

# VOR-A

WINTER HAVEN RGNL (GIF')

DME required.	MISSED APPROACH: Climbing left turn to 2000 direct LAL VORTAC and hold.
<p>⚠ Circling Rwy 5, 11, 29 NA at night. When local altimeter setting not received, use Bartow altimeter setting and increase all MDAs 20 feet.</p>	

ASOS <b>133.675</b>	TAMPA APP CON <b>120.65 290.3</b>	CLNC DEL (GCO) <b>121.725</b>	UNICOM <b>123.05 (CTAF) 0</b>
------------------------	--------------------------------------	----------------------------------	----------------------------------

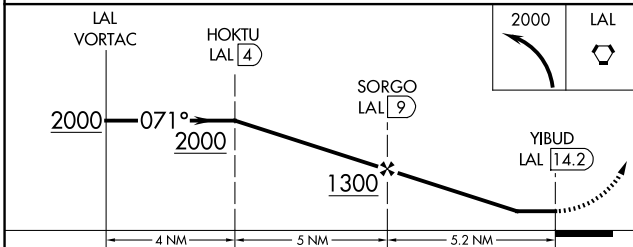
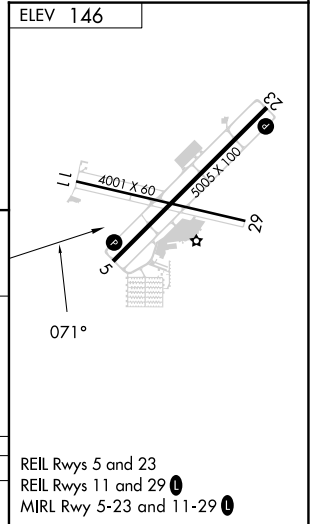


Procedure NA for arrival on LAL VORTAC  
airway radials 046 CW 080.

SE-3, 20 FEB 2025 to 20 MAR 2025

SE-3, 20 FEB 2025 to 20 MAR 2025

▲ 1667



CATEGORY	A	B	C	D
CIRCLING	780-1	634 (700-1)	820-2 674 (700-2)	960-2¾ 814 (900-2¾)

REIL Rwy 5 and 23  
REIL Rwy 11 and 29  
MIRL Rwy 5-23 and 11-29