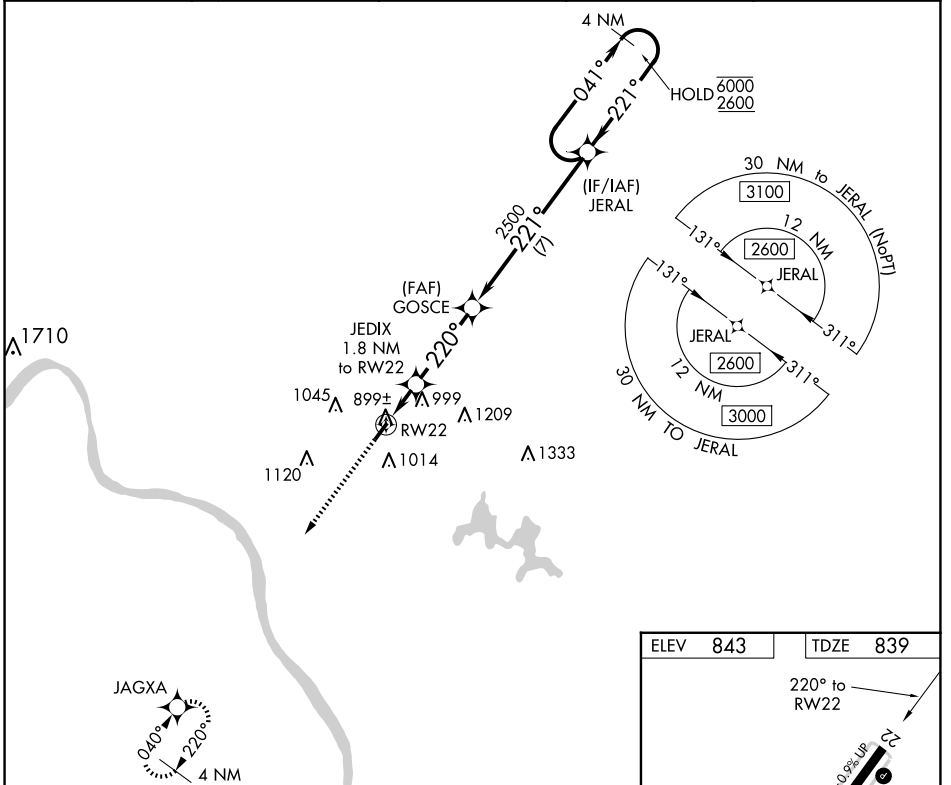


WAAS CH 82227 W22A	APP CRS 220°	Rwy Idg TDZE Apt Elev	3566 839 843
--	------------------------	-----------------------------	---

RNAV (GPS) RWY 22

CLERMONT COUNTY (I69)

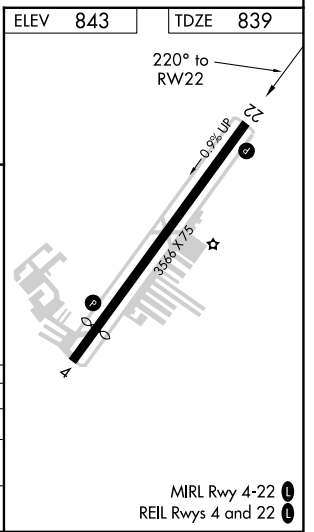
RNP APCH.		MISSED APPROACH: Climb to 2500 direct JAGXA and hold.	
AWOS-3 127.275	CINCINNATI APP CON 121.0 254.25	CLNC DEL 124.9	UNICOM 122.975 (CTAF) 1



EC-2, 20 FEB 2025 to 20 MAR 2025

EC-2, 20 FEB 2025 to 20 MAR 2025

2500	JAGXA	Visual Segment- Obstacles.		JERAL	4 NM Holding Pattern
↑	✧	GOSCE		041° → 6000	← 221° 2600
	JEDIX 1.8 NM to RW22				
	RW22	1420	2500		
	← 1.8	3.4 NM	7 NM		
CATEGORY	A	B	C	D	
LP MDA	1160-1 321 (400-1)			NA	
LNAV MDA	1240-1	401 (400-1)	1240-1 1/8 401 (400-1 1/8)	NA	
CIRCLING	1320-1 477 (500-1)	1360-1 517 (600-1)	1520-2 677 (700-2)	NA	



MIRL Rwy 4-22 **1**
REIL Rws 4 and 22 **1**