

NDB GYG <b>359</b>	APP CRS <b>142°</b>	Rwy Idg TDZE Apt Elev	<b>5005</b> <b>1154</b> <b>1158</b>
-----------------------	------------------------	-----------------------------	---

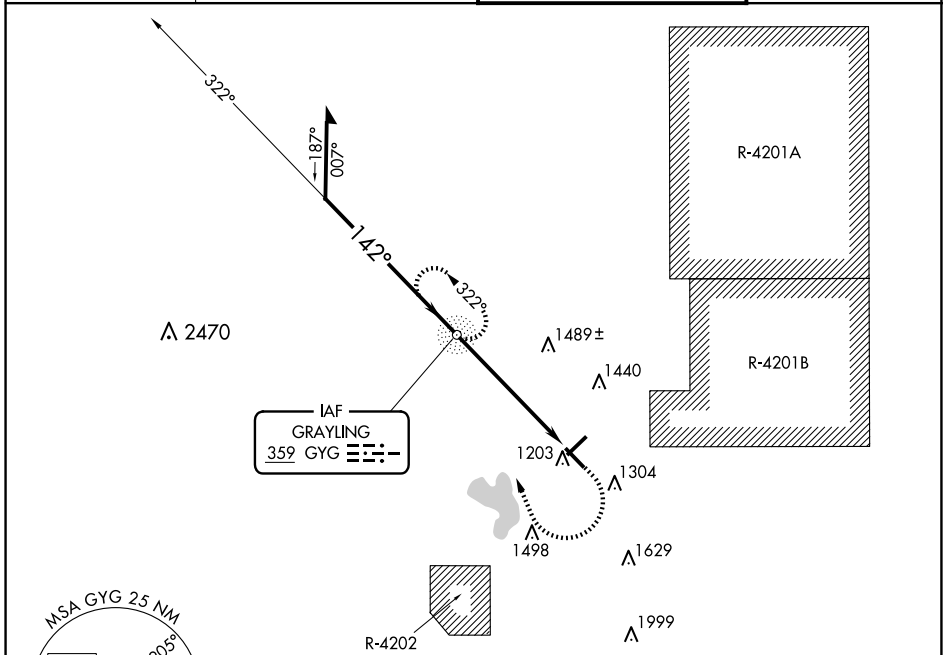
# NDB RWY 14

GRAYLING AAF (GOV)

**⚠** Circling Rwy 5, 23, 32 NA at night. Rwy 14 helicopter visibility reduction below 3/4 SM NA. MISSED APPROACH: Climb to 2000 then climbing right turn to 3000 direct GYG NDB and hold.

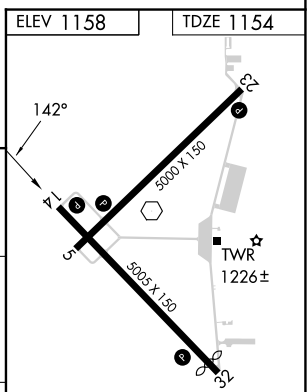
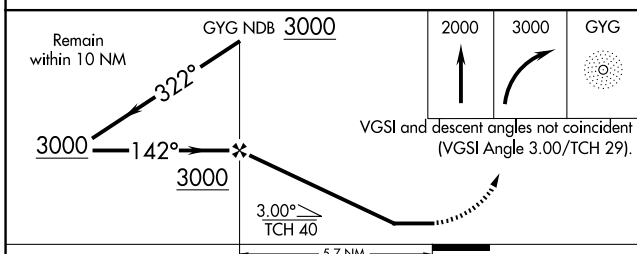
**⚠ NA** When local altimeter setting not received, use HTL altimeter setting and increase all MDA's 60 feet and S-14 and Circling Cats B/C/D visibilities 1/2 SM.

ATIS <b>119.075</b>	MINNEAPOLIS CENTER <b>125.475 269.45</b>	GRAYLING TOWER ★ <b>126.2 (CTAF) 0</b>	GND CON <b>121.9</b>
------------------------	---	---	-------------------------



EC-1, 20 FEB 2025 to 20 MAR 2025

EC-1, 20 FEB 2025 to 20 MAR 2025



CATEGORY	A	B	C	D
S-14	1880-1 726 (800-1)		1880-2 726 (800-2)	
CIRCLING	1880-1 722 (800-1)		1880-2 722 (800-2)	1960-2½ 802 (900-2½)

REIL Rwys 5, 14, 23 and 32				
MIRL Rwy 5-23 and 14-32				
FAF to MAP 5.7 NM				
Knots	60	90	120	150 180
Min:Sec	5:42	3:48	2:51	2:17 1:54