

VENICE, FLORIDA

AL-5960 (FAA)

24361

WAAS CH <b>53433</b> <b>W23A</b>	APP CRS <b>230°</b>	Rwy Idg <b>4377</b> TDZE <b>18</b> Apt Elev <b>18</b>
--	------------------------	---

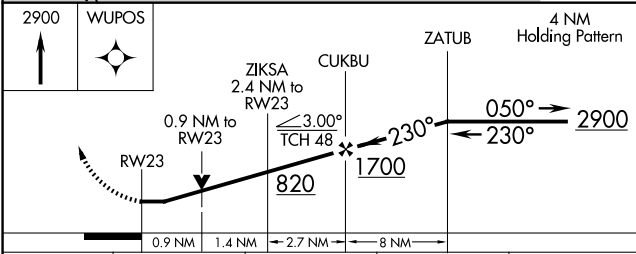
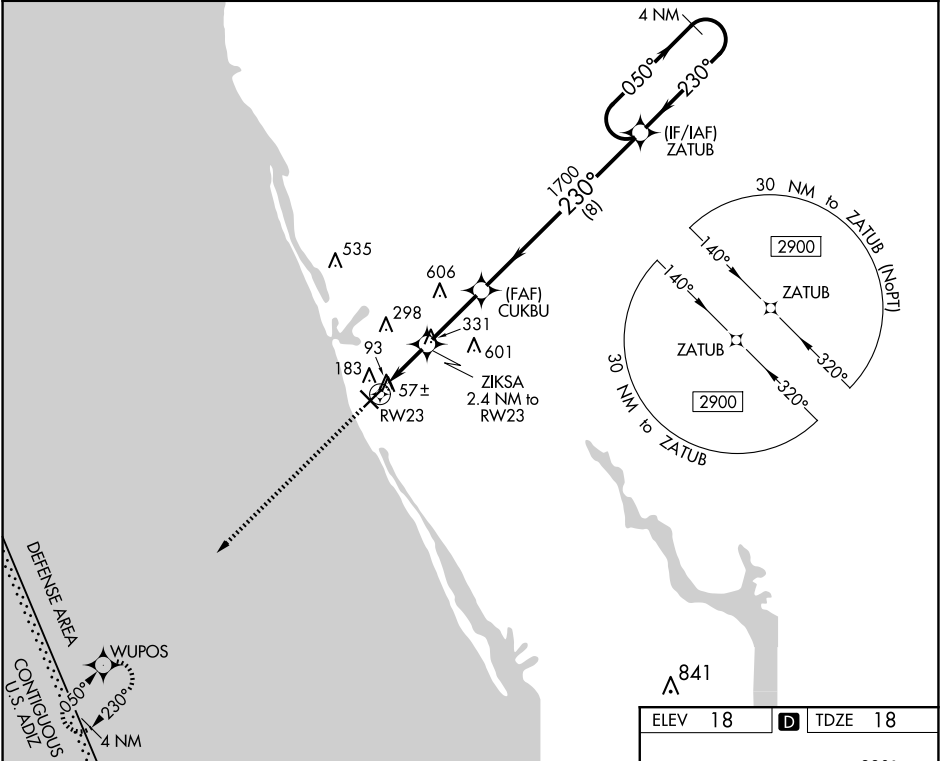
# RNAV (GPS) RWY 23

VENICE MUNI (VNC)

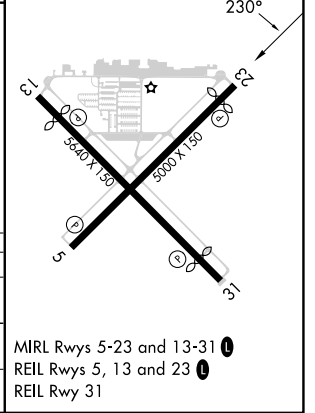
**⚠** When local altimeter setting not received, use Sarasota altimeter setting and increase all MDA 60 feet and increase LP and LNAV Cats C, D visibility 1/8 mile, and Circling Cat C visibility 1/4 mile. DME/DME RNP-0.3 NA. VDP NA with Sarasota altimeter setting. Helicopter visibility reduction below 3/4 SM NA.

**MISSED APPROACH:**  
Climb to 2900 direct WUPOS and hold.

AWOS-3 <b>119.275</b>	TAMPA APP CON <b>119.65 353.575</b>	CLNC DEL <b>118.075</b>	UNICOM <b>122.725 (CTAF) 1</b>
--------------------------	--	----------------------------	-----------------------------------



CATEGORY	A	B	C	D
LP MDA	360-1 342 (400-1)			
LNAV MDA	440-1	422 (500-1)	440-1 1/4	422 (500-1 1/4)
<b>C</b> CIRCLING	500-1	482 (500-1)	700-2 682 (700-2)	920-3 902 (1000-3)



VENICE, FLORIDA  
Orig-B 16OCT14

27°04'N-82°26'W

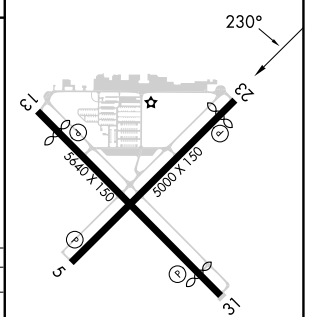
# RNAV (GPS) RWY 23

VENICE MUNI (VNC)

SE-3, 20 FEB 2025 to 20 MAR 2025

SE-3, 20 FEB 2025 to 20 MAR 2025

ELEV 18	<b>D</b> TDZE 18
---------	------------------



MIRL Rwy 5-23 and 13-31 **1**  
REIL Rwy 5, 13 and 23 **1**  
REIL Rwy 31