

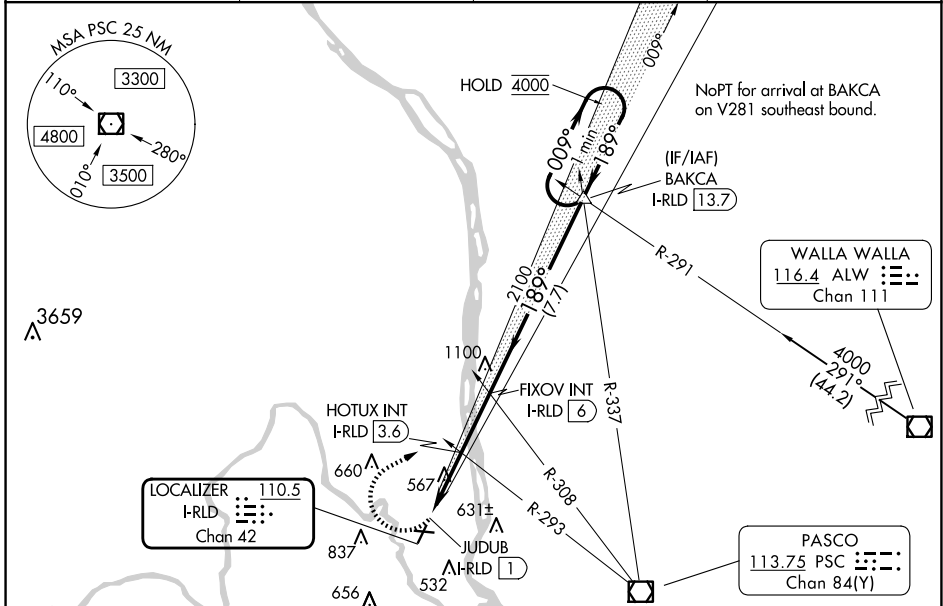
LOC/DME I-RLD <b>110.5</b> Chan <b>42</b>	APP CRS <b>189°</b>	Rwy ldg TDZE Apt Elev	<b>4009</b> <b>390</b> <b>394</b>
---	------------------------	-----------------------------	---

# LOC RWY 19

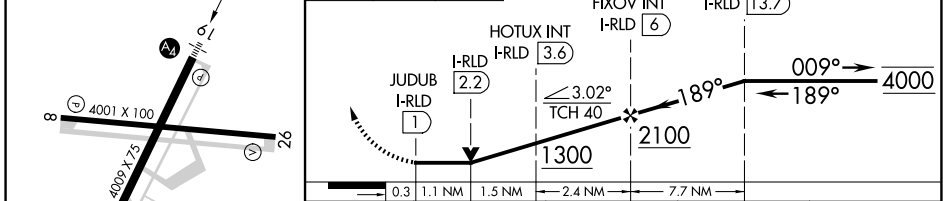
RICHLAND (R.LD)

<p><b>▼</b> Rwy 19 helicopter visibility reduction below ¼ SM NA. Inop table does not apply to S-19 Cat C. For inop ALS increase HOTUX fix minimums S-19 Cat D visibility ¼ SM.</p>	<p><b>MALS</b></p>	<p><b>MISSED APPROACH:</b> Climbing right turn to 4000 on heading 045° and on PSC VOR/DME R-337 to BAKCA INT/I-RLD 13.7 DME and hold, continue climb-in-hold to 4000.</p>
---	--------------------	---

AWOS-3PT <b>132.675</b>	SPOKANE APP CON * <b>128.75 377.2</b>	CLNC DEL <b>122.4</b>	UNICOM <b>122.7 (CTAF) 0</b>
----------------------------	--	--------------------------	---------------------------------



ELEV 394	TDZE 390	4000	PSC R-337	BAKCA	VGSI and descent angles not coincident (VGSI Angle 3.00/TCH 30).	One Minute Holding Pattern
----------	----------	------	-----------	-------	--	----------------------------



CATEGORY	A	B	C	D
S-19	1300-1	910 (1000-1)	1300-2½	910 (1000-2½)
<b>C</b> CIRCLING	1300-1¼	906 (1000-1¼)	1300-2¾ 906 (1000-2¾)	1940-3 1546 (1600-3)
HOTUX FIX MINIMUMS (DUAL VOR RECEIVERS OR DME REQUIRED)				
S-19	880-¾	490 (500-¾)	880-1⅛	490 (500-1⅛)
<b>C</b> CIRCLING	920-1 526 (600-1)	1000-1 606 (700-1)	1200-2¼ 806 (900-2¼)	1940-3 1546 (1600-3)

RICHLAND, WASHINGTON  
 RIL RWys 1 and 19  
 MIRL Rwy 1-19 and 8-26  
 FAF to MAP 5 NM

Knots	60	90	120	150	180
Min:Sec	5:00	3:20	2:30	2:00	1:40

46°18'N-119°18'W

# RICHLAND (R.LD)

## LOC RWY 19

NW-1, 20 FEB 2025 to 20 MAR 2025

NW-1, 20 FEB 2025 to 20 MAR 2025