

| | | |
|-------------|----------|-------------|
| APP CRS | Rwy Idg | 4009 |
| 189° | TDZE | 390 |
| | Apt Elev | 394 |

RNAV (GPS) Y RWY 19

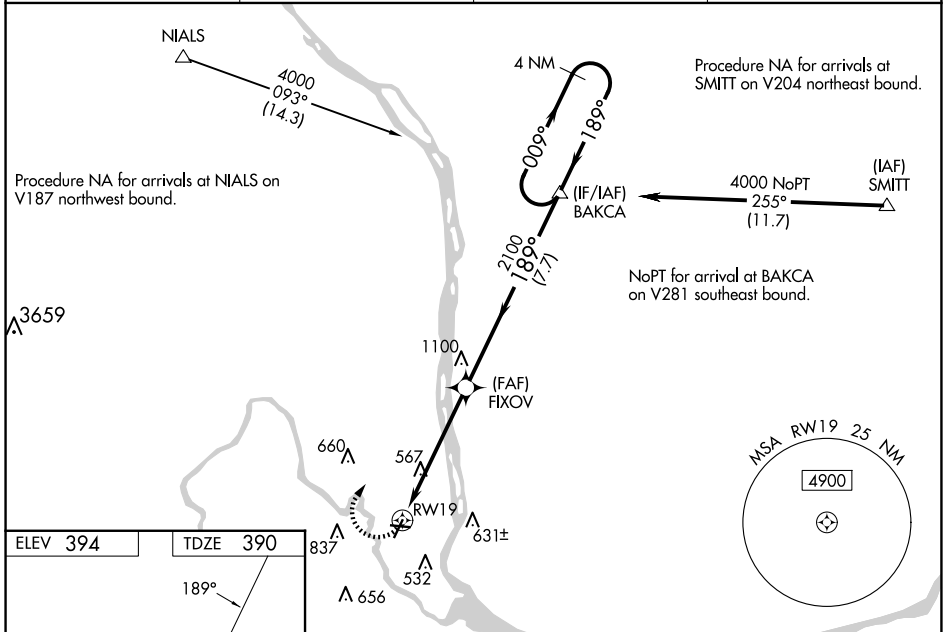
RICHLAND (R.LD)

NA For uncompensated Baro-VNAV systems, LNAV/VNAV NA below -15°C (4°F) or above 41°C (106°F). DME/DME RNP-0.3 NA. When local altimeter setting not received, use Pasco altimeter setting and increase all DA 21 feet and all MDA 40 feet and increase LNAV Cat A visibility ¼ mile, Cat C and D ½ mile, and Circling Cat C visibility ¼ mile. For inop MALS increase LNAV/VNAV Cat D visibility to 1½ mile, LNAV Cat C and D visibility to 2½ mile. When using Pasco altimeter setting increase LNAV/VNAV all Cats visibility to 1¾ mile, LNAV Cat C and D visibility to 2½ mile. VDP and Baro-VNAV NA when using Pasco altimeter setting. Helicopter visibility reduction below ¾ SM NA.

MALS

MISSED APPROACH: Climbing right turn 4000 direct BAKCA and hold, continue climb-in-hold to 4000.

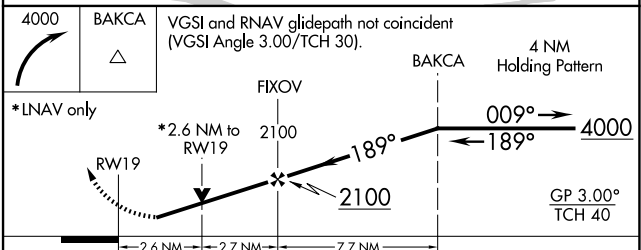
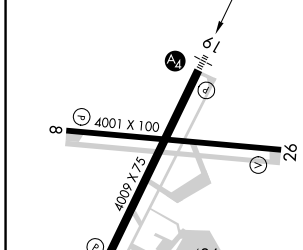
| | | | |
|----------------------------|--|--------------------------|---------------------------------|
| AWOS-3PT 132.675 | SPOKANE APP CON * 128.75 377.2 | CLNC DEL 122.4 | UNICOM 122.7 (CTAF) 0 |
|----------------------------|--|--------------------------|---------------------------------|



NW-1, 20 FEB 2025 to 20 MAR 2025

NW-1, 20 FEB 2025 to 20 MAR 2025

| | |
|----------|----------|
| ELEV 394 | TDZE 390 |
|----------|----------|



| CATEGORY | A | B | C | D |
|-------------------|--|-----------------------|-------------------------|-------------------------|
| LNAV/VNAV DA | 861-1 ³ / ₈ | | 471 (500-1½) | |
| LNAV MDA | 1240- ³ / ₄ 850 (900-¾) | 1240-1 850 (900-1) | 1240-2 | 850 (900-2) |
| C CIRCLING | 1240-1¼ | 846 (900-¼) | 1240-2½ 846 (900-2½) | 1940-3 1546 (1600-3) |

REIL Rwy 1 and 19 **0**
MIRL Rwy 1-19 and 8-26 **0**

RICHLAND, WASHINGTON
Amdt 2 13NOV14

46°18'N-119°18'W

RNAV (GPS) Y RWY 19

RICHLAND (R.LD)