

VOR/DME PSC 113.75 Chan 84(Y)	APP CRS 090°	Rwy Idg TDZE Apt Elev N/A N/A 394
---	------------------------	---

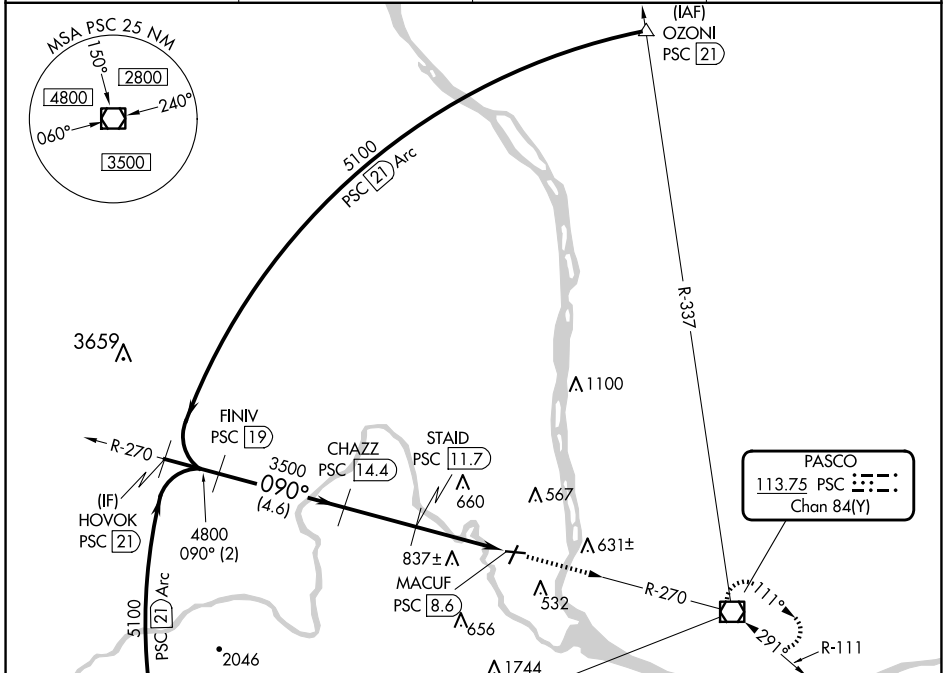
VOR/DME-A

RICHLAND (R.LD)

NA When local altimeter setting not received, use Pasco altimeter setting and increase all MDA 40 feet.

MISSED APPROACH: Climb to 3000 direct PSC VOR/DME and hold.

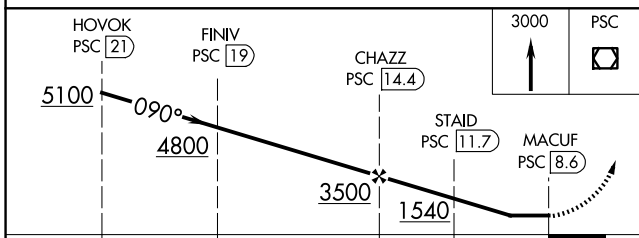
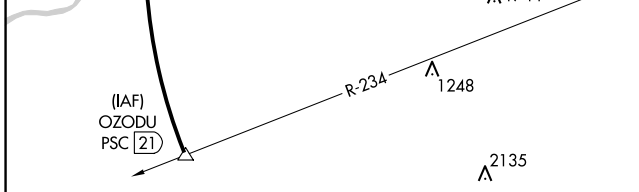
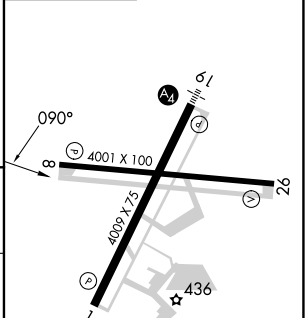
AWOS-3PT 132.675	SPOKANE APP CON * 128.75 377.2	CLNC DEL 122.4	UNICOM 122.7 (CTAF)
----------------------------	--	--------------------------	-------------------------------



NW-1, 20 FEB 2025 to 20 MAR 2025

NW-1, 20 FEB 2025 to 20 MAR 2025

ELEV 394



CATEGORY	A	B	C	D
CIRCLING	1140-1	746 (800-1)	1200-2¼ 806 (900-2¼)	1940-3 1546 (1600-3)

REIL Rwys 1 and 19
MIRL Rwy 1-19 and 8-26