

WAAS CH <b>40300</b> <b>W33A</b>	APP CRS <b>330°</b>	Rwy Idg TDZE Apt Elev	<b>4578</b> <b>15</b> <b>19</b>
--	------------------------	-----------------------------	---------------------------------------

# RNAV (GPS) RWY 33

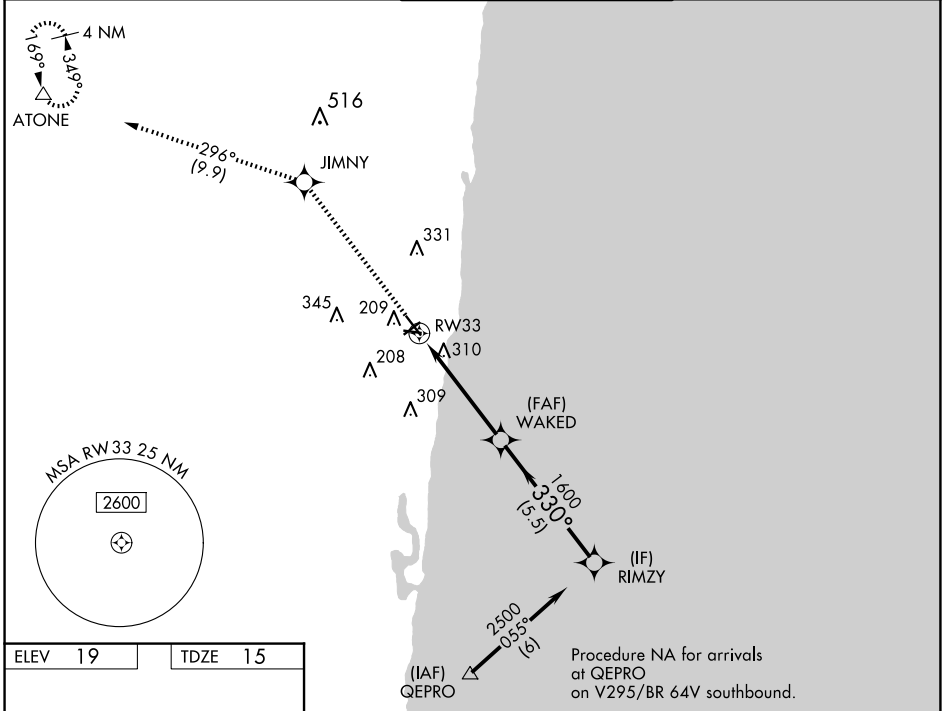
POMPANO BEACH AIRPARK (PMP)

RNP APCH.

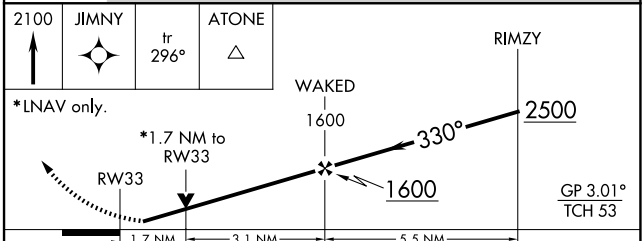
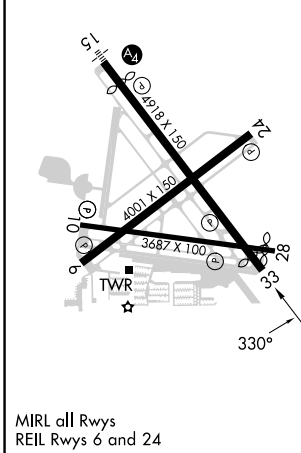
**▼** Circling Rwy 15 NA at night. Rwy 33 helicopter visibility reduction below  $\frac{3}{4}$  SM NA.  
**▲** For uncompensated Baro-VNAV systems, LNAV/VNAV NA below 0°C or above 54°C.  
 When local altimeter setting not received, use Fort Lauderdale Exec altimeter setting.

**MISSED APPROACH:** Climb to 2100 direct JIMNY and on track 296° to ATONE and hold.

ATIS <b>120.55</b>	MIAMI APP CON <b>119.7 306.3</b>	<b>POMPANO BEACH TOWER *</b> <b>125.4 (CTAF) 0</b>	GND CON <b>121.9</b>	UNICOM <b>122.95</b>
-----------------------	-------------------------------------	---	-------------------------	-------------------------



ELEV 19	TDZE 15
---------	---------



CATEGORY	A	B	C	D
LPV DA	265- $\frac{3}{4}$	250 (300- $\frac{3}{4}$ )		NA
LNAV/VNAV DA	700-2 $\frac{1}{2}$	685 (700-2 $\frac{1}{2}$ )		NA
LNAV MDA	620-1	605 (700-1)		NA
<b>C</b> CIRCLING	660-1	641 (700-1)		NA