

WAAS CH <b>56603</b> <b>W06A</b>	APP CRS <b>060°</b>	Rwy Idg TDZE Apt Elev	<b>4001</b> <b>19</b> <b>19</b>
--	------------------------	-----------------------------	---------------------------------------

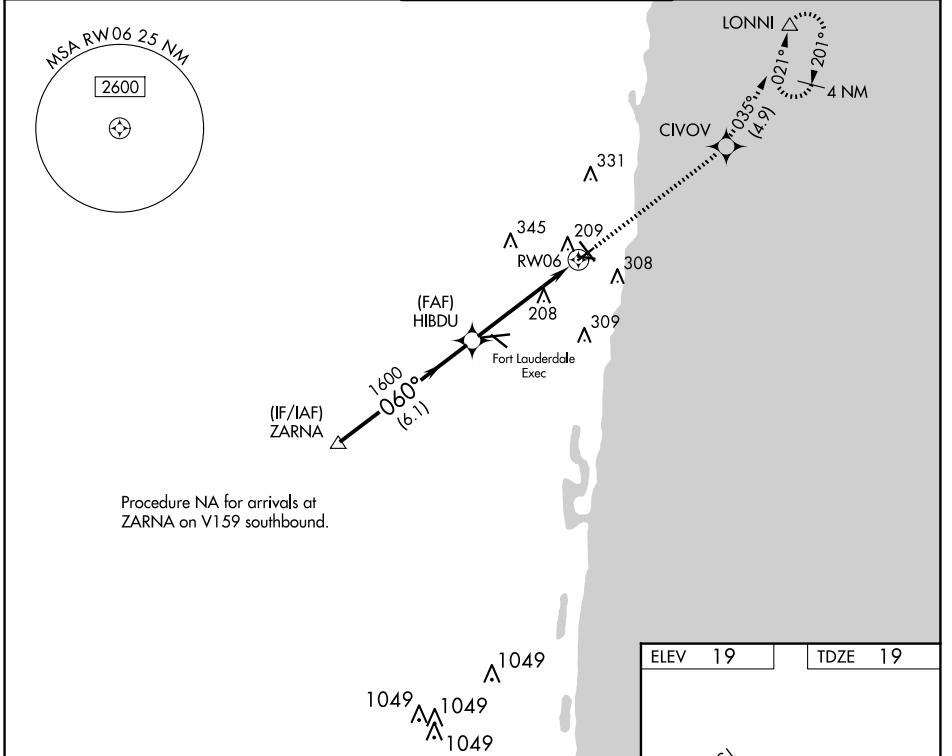
# RNAV (GPS) RWY 6

POMPANO BEACH AIRPARK (PMP)

**⚠** DME/DME RNP-0.3 NA. When local altimeter setting not received, use Fort Lauderdale Exec altimeter setting. Helicopter visibility reduction below 3/4 SM NA.

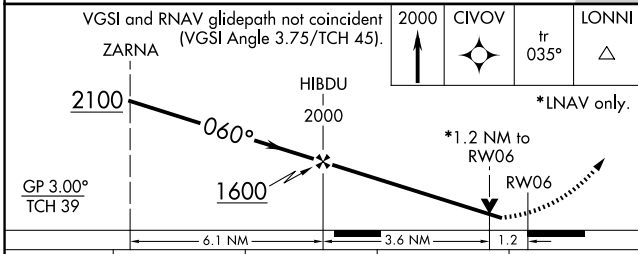
**⚠** MISSED APPROACH: Climb to 2000 direct CIVOV and on track 035° to LONNI and hold.

ATIS <b>120.55</b>	MIAMI APP CON <b>119.7 306.3</b>	POMPANO BEACH TOWER * <b>125.4 (CTAF) 0</b>	GND CON <b>121.9</b>	UNICOM <b>122.95</b>
-----------------------	-------------------------------------	--	-------------------------	-------------------------



SE-3, 20 FEB 2025 to 20 MAR 2025

SE-3, 20 FEB 2025 to 20 MAR 2025



CATEGORY	A	B	C	D
LPV DA	348-1¼	329 (400-1¼)		NA
RNAV MDA	480-1	461 (500-1)		NA
<b>C</b> CIRCLING	660-1	641 (700-1)		NA

