

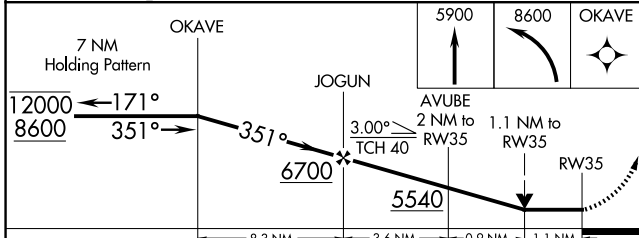
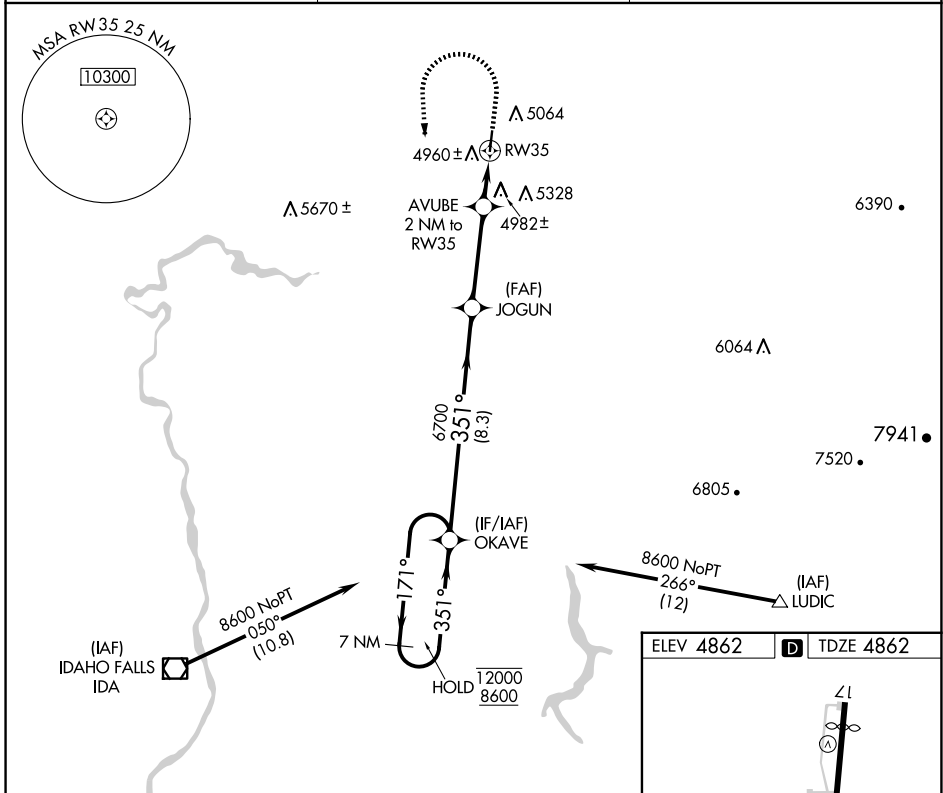
APP CRS 351°	Rwy Idg TDZE Apt Elev	3900 4862 4862
------------------------	-----------------------------	---

RNAV (GPS) RWY 35

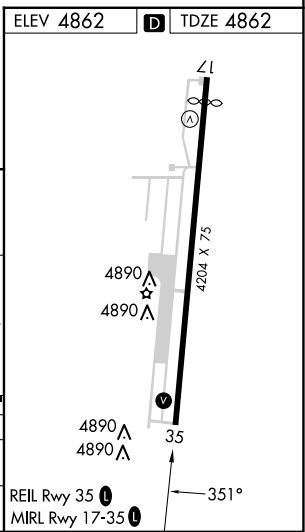
REXBURG-MADISON COUNTY (R.X.E)

RNP APCH - GPS.	MISSED APPROACH: Climb to 5900 then climbing left turn to 8600 direct OKAVE and hold.
Rwy 35 helicopter visibility reduction below 3/4 SM NA.	

ASOS 135.075	SALT LAKE CENTER 128.35 239.25	UNICOM 122.8 (CTAF) 0
------------------------	--	---------------------------------



CATEGORY	A	B	C	D
LNAV MDA	5240-1 378 (400-1)			
CIRCLING	5380-1 518 (600-1)	5580-1 718 (800-1)	5680-2½ 818 (900-2½)	5760-3 898 (900-3)



NW-1, 20 FEB 2025 to 20 MAR 2025

NW-1, 20 FEB 2025 to 20 MAR 2025