

WAAS CH <b>48825</b> <b>W28A</b>	APP CRS <b>303°</b>	Rwy ldg <b>10000</b> TDZE <b>6606</b> Apt Elev <b>6606</b>
--	------------------------	--

# RNAV (GPS) RWY 28

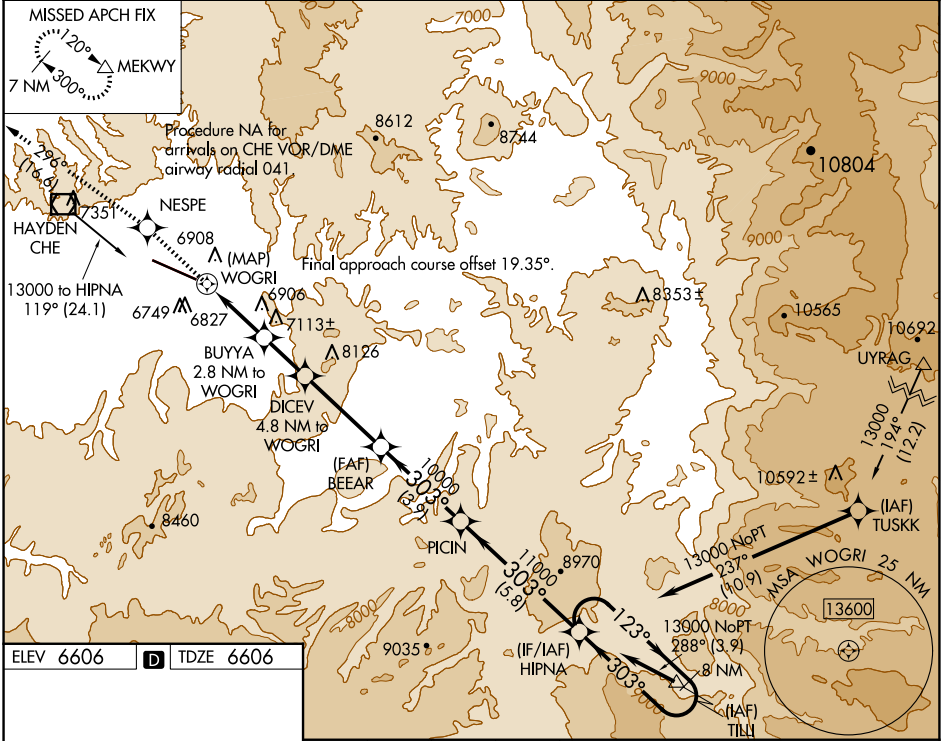
YAMPA VALLEY (HDN)

RNP APCH.

When local altimeter not received use Craig-Moffat altimeter setting and increase all MDA 100 feet, increase LP and LNAV Cat C/D visibility 1/4 mile. Rwy 28 helicopter visibility reduction below 3/4 SM NA.

MISSED APPROACH: Climb to 10000 direct NESPE and on track 296° to MEKWY and hold.

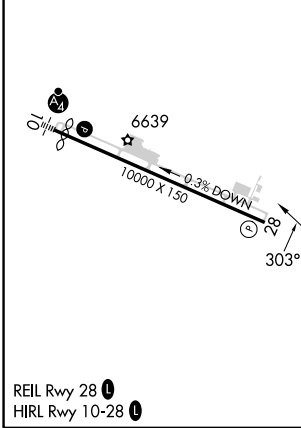
AWOS-3PT <b>119.275</b>	DENVER CENTER <b>120.475 235.975</b>	UNICOM <b>123.0 (CTAF) 0</b>
----------------------------	---	---------------------------------



SW-1, 20 FEB 2025 to 20 MAR 2025

SW-1, 20 FEB 2025 to 20 MAR 2025

ELEV 6606	D	TDZE 6606
-----------	---	-----------



↑	NESPE	MEKWY	HIPNA
tr 296°			8 NM Holding Pattern
	DICEV 4.8 NM to WOGRI	BEEAR	
	BUYYA 2.8 NM to WOGRI		
	WOGRI	TCH 54	
	7820	8600	10000
	0.5	2.8 NM	2 NM
			3.7 NM
			3.9 NM
			5.8 NM

CATEGORY	A	B	C	D
LP MDA	7000-1	394 (400-1)	7000-1 1/8	394 (400-1 1/8)
LNAV MDA	7080-1	474 (500-1)	7080-1 3/8	474 (500-1 3/8)
CIRCLING	7220-1	614 (700-1)	7660-3 1054 (1100-3)	8180-3 1574 (1600-3)