

VOR/DME CHE <b>115.6</b> Chan 103	APP CRS <b>285°</b>	Rwy ldg TDZE Apt Elev <b>6606</b>	<b>N/A</b> <b>N/A</b> <b>6606</b>
---	------------------------	--	---

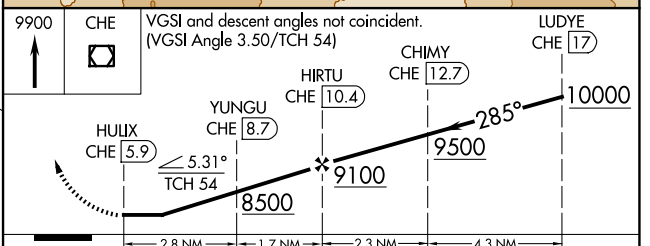
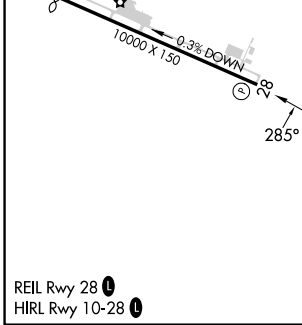
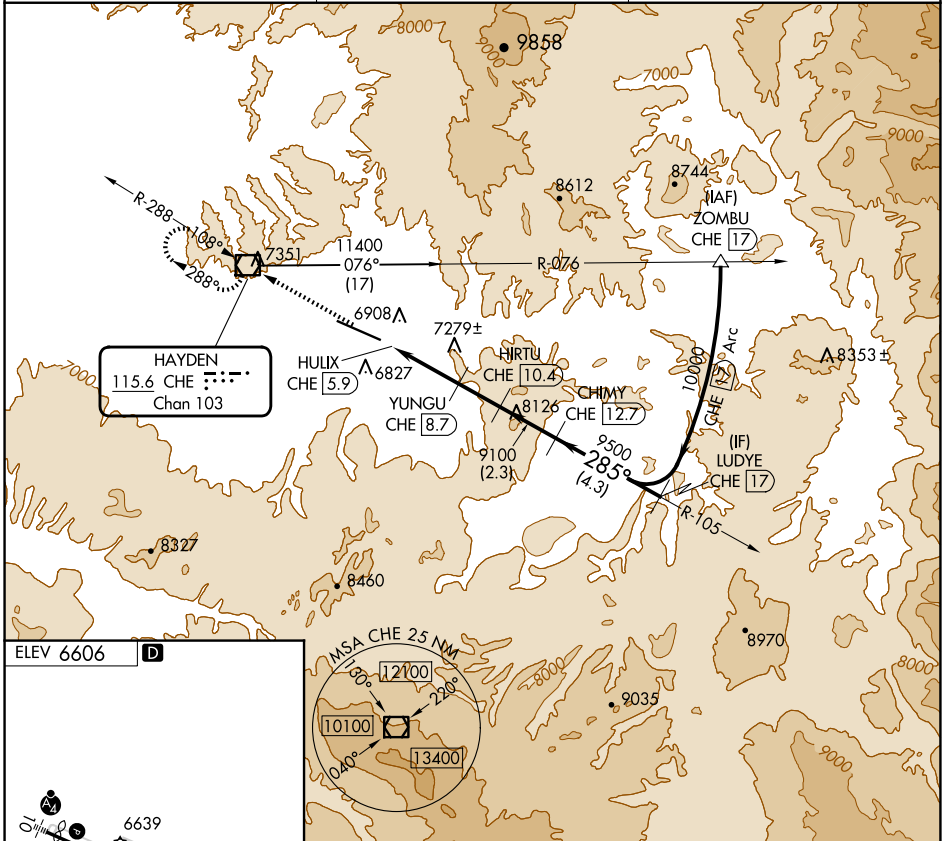
**VOR-B**  
YAMPA VALLEY (HDN)

DME required.

▼  
▲ Rwy 28 helicopter visibility reduction below ¾ SM NA.

MISSED APPROACH: Climb to 9900 direct CHE VOR/DME and hold, continue climb-in-hold to 9900.

AWOS-3PT <b>119.275</b>	DENVER CENTER <b>120.475 235.975</b>	UNICOM <b>123.0 (CTAF) 0</b>
----------------------------	---	---------------------------------



CATEGORY	A	B	C	D
<b>C</b> CIRCLING	7900-1¼ 1294 (1300-1¼)	7900-1½ 1294 (1300-1½)	7900-3 1294 (1300-3)	8200-3 1594 (1600-3)

SW-1, 20 FEB 2025 to 20 MAR 2025

SW-1, 20 FEB 2025 to 20 MAR 2025